

# **SRM VALLIAMMAI ENGINEERING COLLEGE**

**(An Autonomous Institution)**

SRM Nagar, Kattankulathur – 603 203

## **DEPARTMENT OF ELECTRICAL AND ELECTRONICS ENGINEERING**

### **LABORATORY MANUAL**



## **EE3465 –Measurements and Instrumentation Laboratory**

**Regulation – 2023**

**Academic Year 2024 – 2025 (Even Semester)**

*Prepared by*

**Mr.S. Venkatesh/Assistant Professor (O. G)**

**Ms.P. Bency/ Assistant Professor -Sr. G**

**Ms.R.V. Preetha/ Assistant Professor -Sr. G**

# **SRM VALLIAMMAI ENGINEERING COLLEGE**

**(An Autonomous Institution)**

SRM Nagar, Kattankulathur – 603 203

## **DEPARTMENT OF ELECTRICAL AND ELECTRONICS ENGINEERING**

### **Vision of the Institute**

“Educate to excel in Social Transformation”.

To accomplish and maintain international eminence and become a model institution for higher learning through dedicated development of minds, advancement of knowledge and professional application of skills to meet the global demands.

### **Mission of the Institute**

M1: To contribute to the development of human resources in the form of professional engineers and managers of international excellence and competence with high motivation and dynamism, who besides serving as ideal citizen of our country will contribute substantially to the economic development and advancement in their chosen areas of specialization.

M2: To build the institution with international repute in education in several areas at several levels with specific emphasis to promote higher education and research through strong institute-industry interaction and consultancy.

### **Vision of the Department**

To accomplish and maintain international eminence and to contribute to become a model institution for higher learning through development of highly competent and dynamic Electrical and Electronics Engineers while remaining sensitive to ethical, societal and environmental issues.

### **Mission of the Department**

1. To mold Electrical and Electronics Engineers and Entrepreneurs of international excellence as global leaders capable of contributing towards technological innovations, economic growth and environmental safety.

2. To transform the Department into center of excellence in the domain of Electrical and Electronics engineering by promoting research and development, consultancy work and industry- institute interaction activities.

### **Program Educational Objectives (PEOs)**

PEO1: To prepare the students have successful career in industry, Entrepreneur, Leadership, Communication skill and motivate for higher education.

PEO2: To provide students with adequate technical knowledge and skills in using modern engineering tools to apply mathematics, science and engineering fundamentals to the modelling, analysis and solution of problems related to electrical and electronics engineering.

PEO3: To provide an opportunity to work in inter disciplinary groups.

PEO4: To promote student awareness for life-long learning and inculcate professional ethics.

PEO5: To provide necessary foundation on computational platforms and software applications related to the electrical engineering.

# SRM VALLIAMMAI ENGINEERING COLLEGE

(An Autonomous Institution)

SRM Nagar, Kattankulathur – 603 203

## DEPARTMENT OF ELECTRICAL AND ELECTRONICS ENGINEERING

### PROGRAM OUTCOMES

1. **Engineering knowledge:** Apply the knowledge of mathematics, science, engineering fundamentals, and an engineering specialization to the solution of complex engineering problems.
2. **Problem analysis:** Identify, formulate, review research literature, and analyze complex engineering problems reaching substantiated conclusions using first principles of mathematics, natural sciences, and engineering sciences.
3. **Design/development of solutions:** Design solutions for complex engineering problems and design system components or processes that meet the specified needs with appropriate consideration for the public health and safety, and the cultural, societal, and environmental considerations.
4. **Conduct investigations of complex problems:** Use research-based knowledge and research methods including design of experiments, analysis and interpretation of data, and synthesis of the information to provide valid conclusions.
5. **Modern tool usage:** Create, select, and apply appropriate techniques, resources, and modern engineering and IT tools including prediction and modeling to complex engineering activities with an understanding of the limitations.
6. **The engineer and society:** Apply reasoning informed by the contextual knowledge to assess societal, health, safety, legal and cultural issues and the consequent responsibilities relevant to the professional engineering practice.
7. **Environment and sustainability:** Understand the impact of the professional engineering solutions in societal and environmental contexts, and demonstrate the knowledge of, and need for sustainable development.
8. **Ethics:** Apply ethical principles and commit to professional ethics and responsibilities and norms of the engineering practice.
9. **Individual and team work:** Function effectively as an individual, and as a member or leader in diverse teams, and in multidisciplinary settings.
10. **Communication:** Communicate effectively on complex engineering activities with the engineering community and with society at large, such as, being able to comprehend and write effective reports and design documentation, make effective presentations, and give and receive clear instructions.
11. **Project management and finance:** Demonstrate knowledge and understanding of the engineering and management principles and apply these to one's own work, as a member and leader in a team, to manage projects and in multidisciplinary environments.
12. **Life-long learning:** Recognize the need for, and have the preparation and ability to engage in independent and life-long learning in the broadest context of technological change.

### PROGRAM SPECIFIC OUTCOMES

**PSO1:** Ability to apply the acquired knowledge of basic skills, mathematical foundations, principles of electronics, Modeling and design of electronics-based systems in solving engineering Problems in healthcare.

**PSO2:** Ability to use the advanced technology for measurement and develop innovative sustained solutions in health care.

**PSO3:** Ability to examine indigenous clinical gadgets through the application of their core area ideas and emerging ICTs.

**PSO4:** Ability to perform effectively as a part of a team with professional behavior and ethics to achieve a successful career.

## SYLLABUS

**EE3465    MEASUREMENTS AND INSTRUMENTATION LABORATORY    L T P C**  
**0 0 3 1.5**

### **COURSE OBJECTIVES:**

- To learn about the characteristics of sensors for the different measurement applications.
- To demonstrate the measurement of Resistance, Inductance and Capacitance using Bridge Circuits.
- To expose the students to understand signal conditioning circuits for the measurement of temperature
- To demonstrate the calibration of power and energy measurement.
- To impart knowledge about analog to digital and digital to analog converters.

### **LIST OF EXPERIMENTS:**

1. Study of Displacement and Pressure Transducers.
2. Characteristics of Light Sensors-Photo diode, Photo transistor
3. DC Bridges-Wheat stone bridge and Kelvin's bridge.
4. AC Bridges-Maxwell's bridge, Anderson's bridge and Schering bridge
5. Instrumentation Amplifier
6. Measurement of strain using Load cell
7. Calibration of Wattmeter.
8. Calibration of Single-Phase Energy Meter.
9. Measurement of skin temperature-Contact and Non-contact method.
10. Study the Characteristics of Temperature Sensors.
11. Characteristics of A/D Converter.
12. Characteristics of D/A Converter.

**TOTAL : 45 PERIODS**

### **COURSE OUTCOMES:**

**At the end of the course, the student will be able to:**

- ❖ Ability to understand the characteristics of sensors for measurement applications.
- ❖ Ability to understand the demonstration of Resistance, Inductance, Capacitance Measurement using bridge circuits.
- ❖ Ability to understand signal conditioning circuits for the measurement of Temperature.
- ❖ Ability to understand the calibration of Power and Energy measurement.
- ❖ Ability to understand the analog to digital and digital to analog converters.

## CONTENTS

<b>S. No</b>	<b>NAME OF THE EXPERIMENT</b>	<b>Page No</b>
<b>1</b>	Study of Displacement and Pressure Transducers.	
<b>2</b>	Characteristics of Light Sensors-Photo diode, Photo transistor	
<b>3</b>	DC Bridges-Wheat stone bridge and Kelvin's bridge.	
<b>4</b>	AC Bridges-Maxwell's bridge, Anderson's bridge and Schering bridge	
<b>5</b>	Instrumentation Amplifier	
<b>6</b>	Measurement of strain using Load cell	
<b>7</b>	Calibration of Wattmeter.	
<b>8</b>	Calibration of Single-Phase Energy Meter.	
<b>9</b>	Measurement of skin temperature-Contact and Non-contact method.	
<b>10</b>	Study the Characteristics of Temperature Sensors.	
<b>11</b>	Characteristics of A/D Converter.	
<b>12</b>	Characteristics of D/A Converter.	
<b>13</b>	Measurement of Speed & Torque calculation for medical equipment drives. (experiment beyond syllabus)	

## LIST OF EXPERIMENTS

Exp. No.	Name of the Experiment
<b>CYCLE-I</b>	
1	Study of Displacement and Pressure Transducers.
2	Characteristics of Light Sensors-Photodiode, Photo Transistor a) Characteristics of Photodiode b) Characteristics of Photo Transistor
3	Bridge Circuits for Measurement of Resistance, capacitance and inductance a) Measurement of resistance using Wheatstone bridge. b) Measurement of resistance using Kelvin's bridge.
4	Bridge Circuits for Measurement of Resistance, capacitance and inductance a) Measurement of inductance using Anderson Bridge. b) Measurement of capacitance using Schering Bridge
5	Instrumentation Amplifier
6	Measurement of strain using Load cell
<b>CYCLE-II</b>	
7	Calibration of Wattmeter.
8.	Calibration of Single-Phase Energy Meter.
9.	Measurement of skin temperature – contact method Measurement of skin temperature – non-contact method
10	Characteristics of temperature sensors. a) Characteristics of Thermistor b) Characteristics of Thermocouple. c) Characteristics of RTD
11	Characteristics of A/D converter.
12	Characteristics of D/A converter.
<b>ADDITIONAL EXPERIMENTS</b>	
13	Measurement of Speed & Torque calculation for medical equipment drives. a) Measurement of Speed b) Measurement of Torque

Exp No.:1 (a)

## DISPLACEMENT MEASUREMENT USING LVDT

Date:

### Aim:

To study the operation and characteristics of Linear Variable Differential Transformer (LVDT) and to perform displacement measurement from it.

### Apparatus Required:

S. No.	Components / Equipments	Specification	Quantity
1.	LVDT Trainer Kit	---	1
2.	Digital Multimeter	---	1

### Pre-Lab Exercise:

1. Expand LVDT .
2. What are primary and secondary transducers?
3. Give example for primary and secondary transducer.
4. Is LVDT is \_\_\_\_\_(Resistive / Capacitive/ Inductive) transducer.
5. Explain working principle of LVDT.

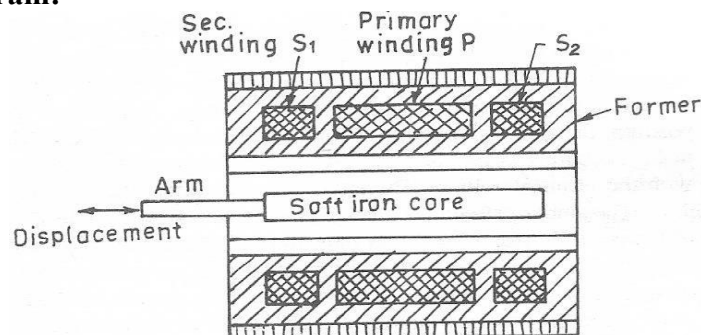
### Theory:

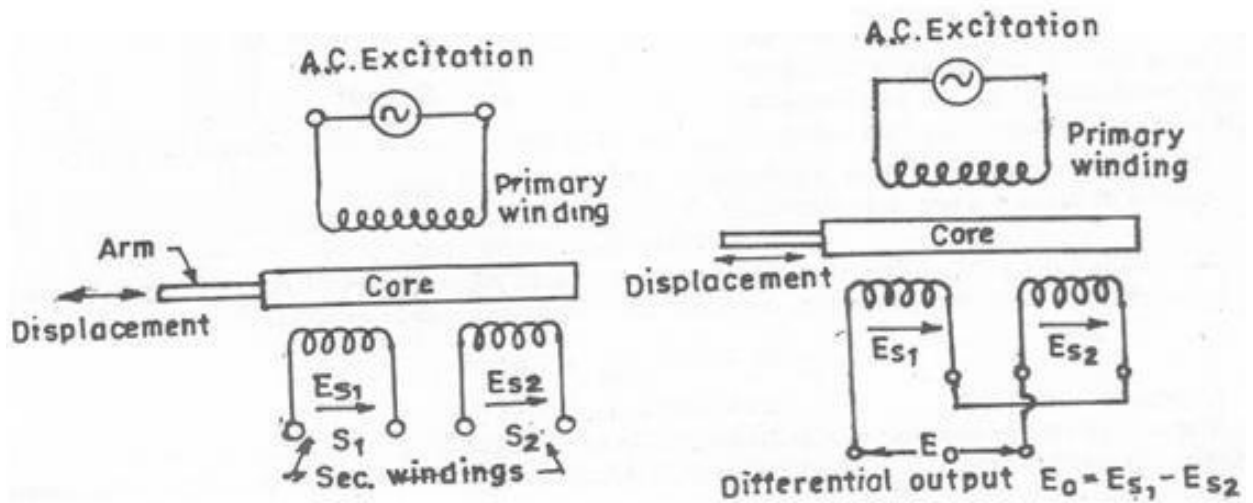
LVDT is the most commonly and extensively used transducer, for linear displacement measurement. The LVDT consists of three symmetrical spaced coils wound onto an insulated bobbin. A magnetic core, which moves through the bobbin without contact, provides a path for the magnetic flux linkage between the coils. The position of the magnetic core controls the mutual inductance between the primary coil and with the two outside or secondary coils. When an AC excitation is applied to the primary coil, the voltage is induced in secondary coils that are wired in a series opposing circuit. When the core is centered between two secondary coils, the voltage induced in the secondary coils are equal, but out of phase by  $180^\circ$ . The voltage in the two coils cancels and the output voltage will be zero.

### Circuit Operation:

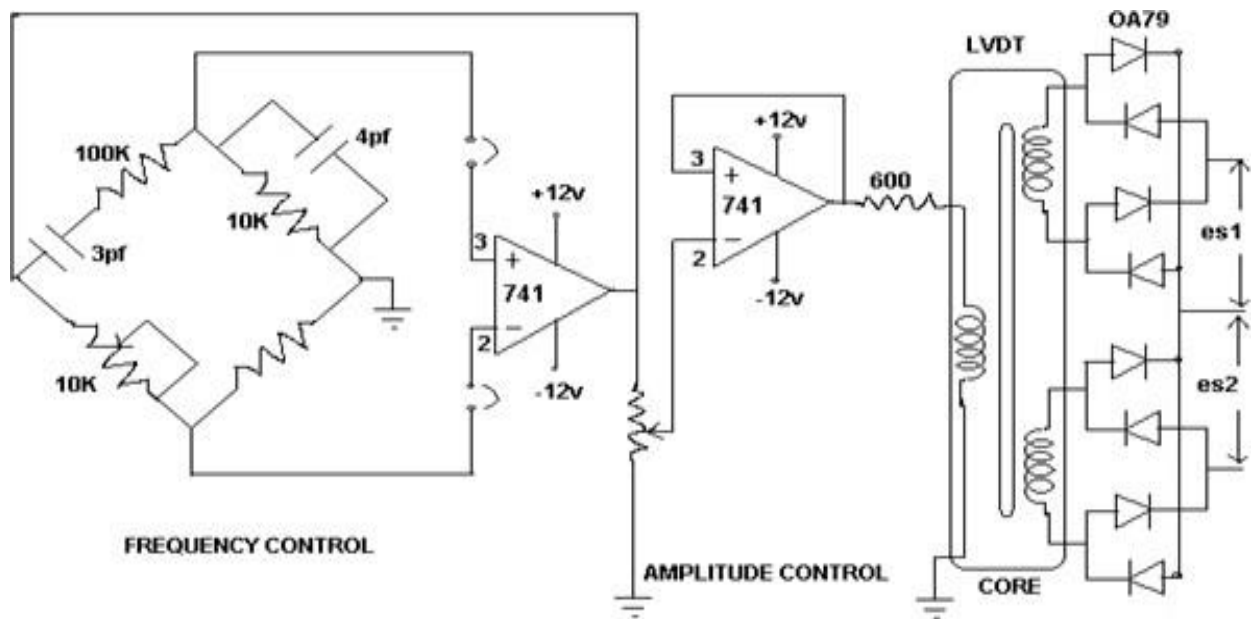
The primary is supplied with an alternating voltage of amplitude between 5V to 25V with a frequency of 50 cycles per sec to 20 K cycles per sec. The two secondary coils are identical & for a centrally placed core the induced voltage in the secondaries  $E_{S1}$  &  $E_{S2}$  are equal. The secondaries are connected in phase opposition. Initially the net o/p is zero. When the displacement is zero the core is centrally located. The output is linear with displacement over a wide range but undergoes a phase shift of  $180^\circ$ . It occurs when the core passes through the zero displacement position.

### Generalized Diagram:





**Trainer kit Diagram:**



**Procedure:**

1. Connect the multimeter at the output terminal of the LVDT kit.
2. Switch ON the LVDT kit.
3. Move the core to different positions using screw gauge and measure the secondary voltages  $E_{s1}$  &  $E_{s2}$
4. Tabulate the readings & calculate the output voltage ( $E_0$ ).

**Graph:**

Plot the graph between core displacement (X-axis) and Output Voltage (Y-axis).

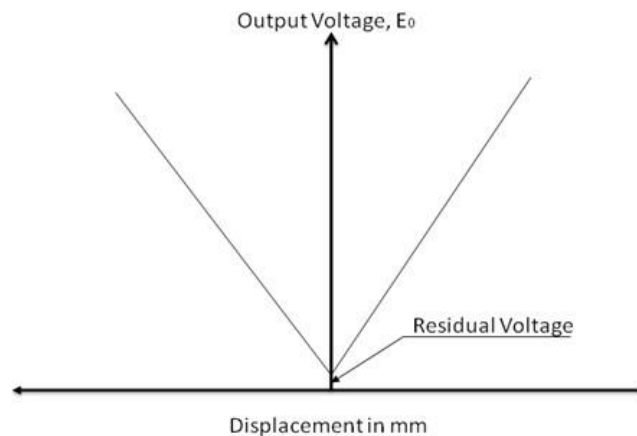


**Tabular column:**

Screw Guage Reading	Core displacement (mm)	LVDT Output (mV)
		$E_0 = (E_{s1} - E_{s2})$
0	-10	
2	-8	
4	-6	
6	-4	
8	-2	
10	0	
12	2	
14	4	
16	6	
18	8	
20	10	

Note : -ve Sign indicates the direction of displacement.

**Model graph:**



**Post-Lab Exercise:**

1. Explain how LVDT is used for displacement measurement?
2. What are the other applications of LVDT?
3. Why  $E_0 = E_{s1} - E_{s2}$  ?
4. What causes residual voltage at null displacement?
5. What are the different types of displacement transducers?
6. What is Null voltage?
7. What are the advantages of LVDT?

**Result:**

Thus the operation and characteristics of LVDT was studied and its characteristic was plotted.

**Ex. No: 1 (b) STUDY OF PRESSURE TRANSDUCER – BOURDON TUBE**

**Date:**

**AIM:**

To study the pressure transducer using Bourdon tube and to obtain its characteristics.

**APPARATUS REQUIRED :**

S.No	Name of the Trainer Kit/ Components	Quantity
1.	Bourdon pressure transducer trainer	1
2.	Foot Pump	1
3.	Multi meter	1
4.	Patch cards	Few

**THEORY:**

Pressure measurement is important not only in fluid mechanics but virtually in every branch of Engineering. The bourdon pressure transducer trainer is intended to study the characteristics of a pressure(P) to current (I) converter. This trainer basically consists of

1. Bourdon transmitter.
2. Pressure chamber with adjustable slow release valve.
3. Bourdon pressure gauge (mechanical)
4. (4- 20) mA Ammeters, both analog and digital.

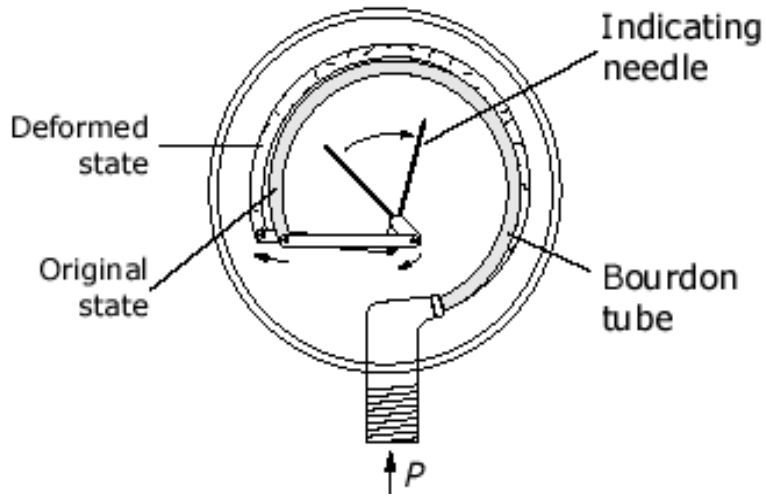
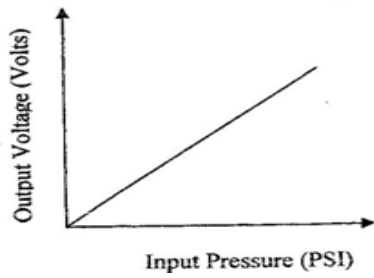
The bourdon transmitter consists of a pressure gauge with an outside diameter of 160 mm including a built-in remote transmission system. Pressure chamber consists or a pressure tank with a provision to connect manual pressure foot pump, slow release valve for discharging the air from this pressure tank, connections to mechanical bourdon pressure gauge, and the connections for bourdon pressure transmitter. Bourdon pressure gauge is connected to pressure chamber. This gauge helps to identify to what extent this chamber is pressurized.

There are two numbers of 20 mA Ammeters. A digital meter is connected in parallel with analog meter terminals and the inputs for these are terminated at two terminals (+ ve and – ve). So positive terminal and negative terminal of bourdon tube is connected to, positive and negative terminals of the Ammeters.

**PROCEDURE:**

1. The foot pump is connected to the pressure chamber.
2. Switch on the bourdon transducer trainer.
3. Release the air release valve by rotating in the counter clockwise direction.
4. Record the pressure and Voltage.
5. Use the foot pump and slowly inflate the pressure chamber, so that the pressure in the chamber increases gradually.
6. Tabulate the result.
7. Draw the graph. Input pressure Vs Output voltage.

**DIAGRAM:**



**PRESSURE TRANSDUCER – BOURDON TUBE**

**MODEL GRAPH**

**TABULATION**

Sl. No.	Input Pressure (PSI)	Output Pressure (Kg/ cm <sup>2</sup> )	Output Voltage mV
1			
2			
3			
4			
5			
6			
7			
8			
9			
10			

## **REVIEW QUESTIONS**

1. Define Transducer. What are active and passive transducers?
2. List any four pressure measuring transducers?
3. What is the advantage of pinion in bourdon tube?
4. Write the operational principle of bourdon tube.
5. State the advantages of bourdon tube over bellows & diaphragms.

## **RESULT:**

Thus, the study of pressure transducer using Bourdon tube and its characteristics was obtained

Exp No.:2(a)  
Date:

## CHARACTERISTICS OF PHOTODIODE

**Aim:**

To determine the characteristics of photodiode.

**Apparatus Required:**

S. No.	Components / Equipments	Specification	Quantity
1.	Ammeter	(0-25) mA	1
2.	Voltmeter	(0-30) V	1
3.	Power Supply	(0-30)V	1
4.	Light source	Few Watts	1
5.	Resistors	1K $\Omega$	1
6.	Photodiode	IPL 34C	1
7.	Bread Board	---	1
8.	Connecting wires	---	Few

**Pre-Lab Exercise:**

1. What is the difference between ordinary diode and photo diode?
2. Why it is called as photo diode?
3. State the principle of "Photo conductive effect".
4. What are the materials used for fabricating photodiode?

**Theory:**

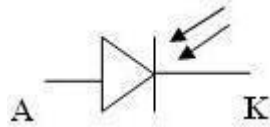
Both Photo diode and Photo transistor operates based on the principle of " Photo conductive effect". When radiation is incident on a semiconductor, it absorbs some light, as a result its conductivity varies directly with the intensity of light and its resistances varies inversely with the intensity of light. This effect is called as Photo conductive effect.

**Photo diode:**

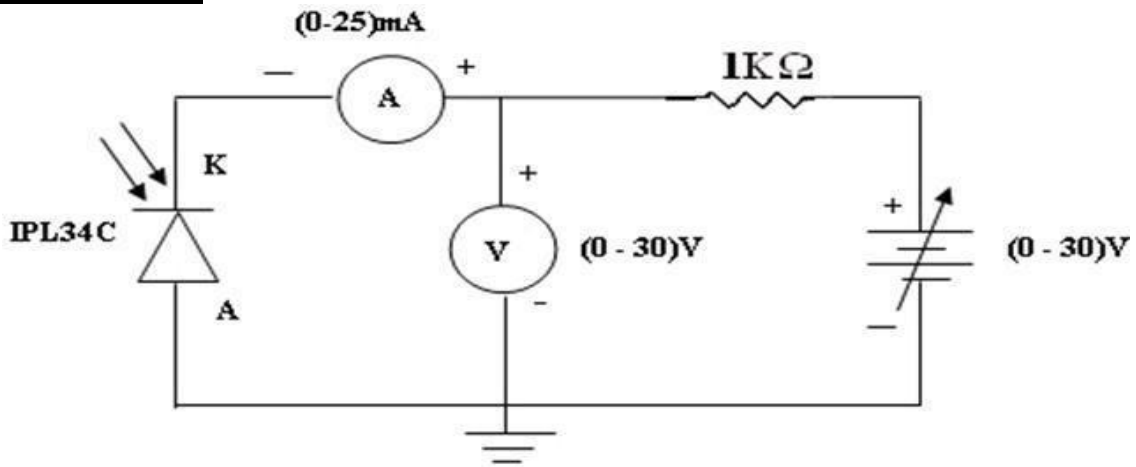
It is a semiconductor PN-junction device whose region of operation is limited to the reverse biased region. Photo diode is connected in reverse biased condition .The depletion region width is large under normal condition, it carries small reverse current due to the minority charge carriers in  $\mu\text{A}$ . If the Photo diode is forward biased, the current flowing through it is in mA. The applied forward biased voltage takes the control of the current instead of the light. The change in current due to light is negligible and cannot be noticed. The resistances of forward biased diode are not affected by the light. Hence to have significant effect of light on the current and to operate photo diode as a variable resistor, it is always operated (or) connected in reverse bias. When there is no light, it is called as dark current because there is no current flow due to infinite resistance. When there is a light, more current flows due to very less resistance. Under reverse bias current control due to light only instead of applied voltage.

Photodiode is used in cameras, medical devices, safety equipment, optical communication devices, position sensors, bar code scanners, automotive devices and surveying instruments

**Symbol of Photodiode:**



**Circuit Diagram:**



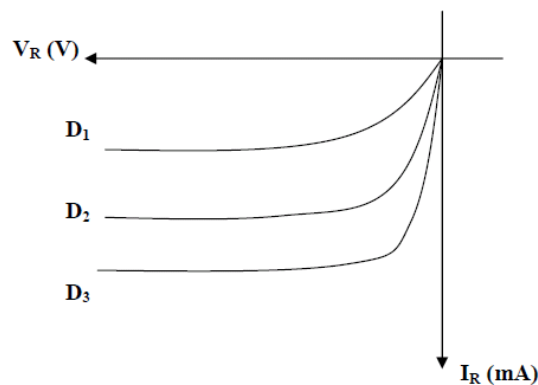
**Procedure:**

1. Connections are given as per the circuit diagram.
2. Place the photo diode at a particular distance from the illumination.
3. Voltage is varied using R.P.S insteps of 1V and corresponding current is noted.
4. Readings are tabulated for various distances and the graph is drawn between voltage and current

**Tabular Column:**

$D_1 =$ (cm)		$D_2 =$ (cm)	
$V_R$ (V)	$I_R$ (mA)	$V_R$ (V)	$I_R$ (mA)

**Model Graph:**



**Post-Lab Exercise:**

1. How photodiode works?
2. What is the function of the photodiode?
3. Why the Photo diode is always operated in reverse bias?
4. Define dark current in photodiode.
5. State the applications of photodiode.

**Result:**

Thus the characteristics of photodiode is determined and the graph is plotted for various distances of light source.

Exp No.: 2(b)

## CHARACTERISTICS OF PHOTO TRANSISTOR

Date:

### Aim:

To determine the characteristics of photo transistor.

### Apparatus Required:

S. No.	Components / Equipments	Specification	Quantity
1.	Ammeter	(0-50) mA	1
2.	Voltmeter	(0-30) V	1
3.	Power Supply	(0-30)V	1
4.	Light source	Few Watts	1
5.	Resistors	1K $\Omega$	1
6.	Photo transistor	L14G3	1
7.	Bread Board	---	1
8.	Connecting wires	---	Few

### Pre-Lab Exercise:

1. State the principle of "Photo conductive effect".
2. What is the difference between photodiode and phototransistor?
3. What is the difference between ordinary transistor and photo transistor?
4. Why it is called as photo transistor ?
5. What are the materials used for fabricating phototransistor?

### Theory:

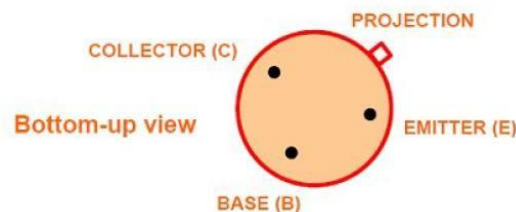
Both Photo diode and Photo transistor operates based on the principle of " **Photo conductive effect**". When radiation is incident on a semiconductor, it absorbs some light, as a result its conductivity varies directly with the intensity of light and its resistances varies inversely with the intensity of light. This effect is called as **Photo conductive effect**.

The photo transistor has a light sensitive collector to base junction .A lens is used in transistor package to expose to an incident ligh. When no light is incident, a small leakage current flow from collector to emitter called *ICEO* , due to small thermal generation .This is very small current, of the order of nA this is called a dark current.

When the base is exposed to the light, the base current is produced which is proportional to the light intensity. As light intensity increases, the base current increases exponentially. Similarly the collector current also increases corresponding to the increase in the lightintensity.

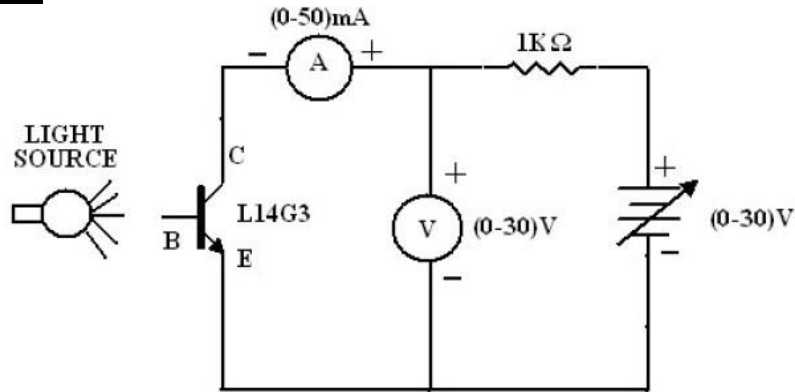
Photo transistor can be both a two lead (and) three lead devices. For two lead devices, the base is not electrically available and the device use is totally light dependent

### **Photo transistor Terminal Convention:**





**Circuit Diagram:**



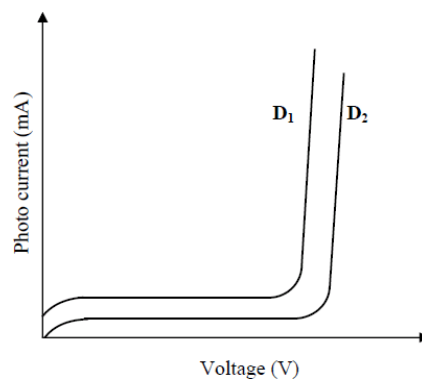
**Procedure:**

1. Connections are given as per the circuit diagram.
2. Phototransistor is placed at a particular distance from the illumination.
3. Voltage is varied using RPS in steps of 1 volts and corresponding current is noted.
4. Readings are tabulated for various distances and the graph is drawn between voltage and current

**Tabular Column:**

S.No.	Voltage (V)	Photo Current (mA)	
		D <sub>1</sub> = (cm)	D <sub>2</sub> = (cm)

**Model Graph:**



**Post-Lab Exercise:**

1. What is the difference between photodiode and phototransistor?
2. How many terminals are there in phototransistor?
3. How phototransistor works?
4. How phototransistor is fabricated?
5. State the applications of phototransistor.

**Result:**

Thus the characteristics of photo transistor is determined and the graph is plotted for various distances.

**Exp No.:3(a) MEASUREMENT OF RESISTANCE USING WHEATSTONE'S BRIDGE****Date:****Aim:**

To measure the value of unknown resistance in the medium resistance range using Wheatstone's Bridge.

**Apparatus Required:**

S. No.	Components / Equipments	Specification	Quantity
1.	Resistors	1KΩ	2
2.	Unknown Resistors	Different value	4
3.	Decade Resistance Box	---	1
4.	Power Supply	0-30V	1
5.	Digital Multimeter	---	1
6.	Bread Board	---	1
7.	Connecting wires	---	Few

**Pre-Lab Exercise:**

1. What are called resistance bridges?
2. Name the bridge used for medium range and high range of resistance measurement.
3. How unknown resistance can be measured using Wheatstone bridge?
4. What is called as decade resistance box?
5. When the bridge is said to be balanced?

**Theory:**

The medium range of resistance is from 1KΩ to some mega ohms. The wheatstone bridge operates upon null indication principle. This means the indication is independent of the calibration of the null indicating instrument or any of its characteristics. For this reason, very high degree of accuracy can be achieved using Wheatstone bridge. Accuracy of 0.1% is quite common with a wheatstone bridge as opposed to accuracies of 3% to 5% with ordinary ohmmeter for measurement of medium resistances. The bridge has 4 resistance arms, consisting of resistances  $R_1$ ,  $R_2$ ,  $R_3$  and  $R_x$  together with a source of emf and a null detector usually a galvanometer G or other sensitive current meter. The current through the galvanometer depends on the potential difference between the points B and D. the bridge is said to be balanced when there is no current through the galvanometer or when the potential difference across the galvanometer is zero.

For bridge balance,  $I_1 R_1 = I_2 R_2$  -----(1)

For the galvanometer current to be zero, the following condition also exists:

$$I_1 = I_3 = \frac{E}{R_1 + R_2} \text{ ----- (2)}$$

$$I_2 = I_4 = \frac{E}{R_x + R_3} \text{ -----(3)}$$

E = emf of the battery.

Combining equations (1), (2) and (3) and simplifying, we obtain

$$\frac{R_1}{R_1 + R_2} = \frac{R_x}{R_x + R_3} \text{ -----(4)}$$

From which,

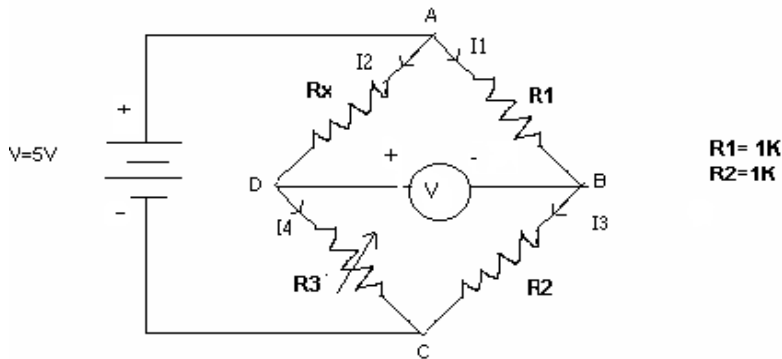
$$R_2 R_x = R_1 R_3 \dots \dots \dots (5)$$

Equation (5) is the well known expression for the balance of Wheatstone bridge. If three of the resistances are known, the fourth may be determined from equation (5)

$$R_x = R_3 \frac{R_1}{R_2}$$

Where  $R_x$  is the unknown resistance  $R_3$  is called the ‘standard arm’ of the bridge and  $R_1$  and  $R_2$  are called the ‘ratio arms’.

**Circuit Diagram:**



**Formulae:**

$$\% \text{ Error} = \frac{\text{Measured Value} - \text{True Value}}{\text{True Value}} \times 100$$

$$R_x = R_3 \frac{R_1}{R_2}$$

**Procedure:**

1. Connections are given as per the circuit diagram.
2. Supply is switched ON.
3. Check the zero balance initial condition.
4. When the unknown resistance  $R_x$  is connected, the bridge becomes unbalanced.
5. The bridge is balanced by varying the DRB ( $R_3$ ).
6. The value of unknown resistance is calculated by the given formulae.
7. The above steps are repeated for different value of unknown resistances.
8. Calculate the % error using the given formula.

**Tabular Column:**

S. No	Resistance $R_3$ (k $\Omega$ )	Unknown Resistance $R_x$		% error
		True (k $\Omega$ )	Measured(k $\Omega$ )	

**Post-Lab Exercise:**

1. What are the applications of Wheatstone bridge?
2. What are standard arm and ratio arm in wheat stone bridge?
3. What is the relationship among the resistors under balanced condition?
4. What are the detectors used for DC bridges?
5. What do you meant by sensitivity?
6. What is the relationship between sensitivity and accuracy of Wheatstone bridge?
7. Why Wheatstone bridge is not suitable for low resistance measurement?

**Result:**

Thus the Wheatstone bridge is constructed and the unknown resistors were determined.

### Exp No.:3(b) MEASUREMENT OF RESISTANCE USING KELVIN'S DOUBLE BRIDGE

Date:

#### Aim:

To find the unknown value of low resistance using Kelvin's Double Bridge.

#### Apparatus Required:

S. No.	Components / Equipments	Specification	Quantity
1.	Resistors	1KΩ	4
2.	Unknown Resistors	Different value	4
3.	Decade Resistance Box	---	1
4.	Power Supply	---	1
5.	Digital Multimeter	---	1
6.	Bread Board	---	1
7.	Connecting wires	---	Few

#### Pre-Lab Exercise:

1. What are the methods of measuring low resistance?
2. Why this bridge is called Kelvin's double bridge?
3. Kelvin's double bridge is suitable for----- resistance measurement.
4. Kelvin's double bridge is the modified form of -----

#### Theory:

Kelvin's double bridge is a modification of Kelvin's bridge and provides more accuracy in measurement of low resistances. It incorporates two sets of ratio arms and the use of four terminal resistors for the low resistance arms, as shown in circuit diagram.

$R_x$  is the resistance under test and  $S$  is the resistor of the same higher current rating than one under test. Two resistances  $R_x$  and  $S$  are connected in series with a short link of as low value of resistance  $r$  as possible.  $P$ ,  $Q$ ,  $p$ ,  $q$  are four known non inductive resistances, one pair of each ( $P$  and  $p$ ,  $Q$  and  $q$ ) are variable. A sensitive galvanometer  $G$  is connected across dividing points  $PQ$  and  $pq$ . The ratio  $P/Q$  is kept the same as  $p/q$ , these ratios have been varied until the galvanometer reads zero.

#### **Balance Equation:**

$$E_{ab} = \frac{P}{P+Q} E_{ac} \text{ and } E_{ac} = I \left[ R+S + \frac{(p+q)r}{p+q+r} \right] \text{----- (1)}$$

$$\text{and } E_{amd} = I \left[ R + \frac{p}{p+q} \left\{ \frac{(p+q)r}{p+q+r} \right\} \right] = I \left[ R + \frac{pr}{p+q+r} \right] \text{----- (2)}$$

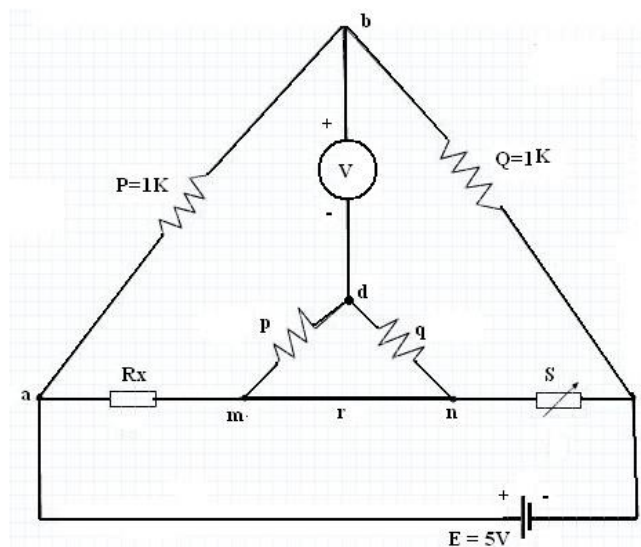
For zero galvanometer deflection,  $E_{ab} = E_{amd}$

$$\text{or } \frac{P}{P+Q} I \left[ R+S + \frac{(p+q)r}{p+q+r} \right] = I \left[ R + \frac{pr}{p+q+r} \right]$$

$$\text{or } R = \frac{P}{Q} S + \frac{qr}{p+q+r} \left[ \frac{P}{Q} - \frac{p}{q} \right] \text{----- (3)}$$

$$\text{Now, if } \frac{P}{Q} = \frac{p}{q} \text{ Equation (3) becomes, } R = \frac{P}{Q} S \text{----- (4)}$$

**Circuit Diagram:**



**Formulae used:**

$$\% \text{ Error} = \frac{\text{Measured Value} - \text{True Value}}{\text{True Value}} \times 100$$

$$R_x = \frac{P}{Q} \cdot S$$

**Procedure:**

1. Connections are given as per the circuit diagram.
2. Switched ON the supply.
3. Check the initial zero balance condition.
4. The bridge becomes unbalanced when unknown resistance  $R_x$  is connected.
5. The bridge is balanced by varying standard resistance.
6. Unknown resistance  $R_x$  is calculated using balance equation.
7. The above steps are repeated for various values of unknown resistance  $R_x$ .

**Tabular Column:**

S.No	P ( $\Omega$ )	Q ( $\Omega$ )	S ( $\Omega$ )	Unknown Resistance $R_x$ ( $\Omega$ )		% Error
				True	Measured	

**Model Calculation:**

**Post-Lab Exercise:**

1. What are the advantages of kelvin's double bridge?
2. What are the limitations of kelvin's double bridge?
3. Explain how Kelvin's double bridge can be used for measuring low resistance?
4. What is the advantage of Kelvin's double bridge over Wheatstone's bridge?
5. Derive the balance equation of Kelvin's double bridge.

**Result:**

Thus the given unknown resistors value is measured using Kelvin's double bridge

**Exp No.:4(a) MEASUREMENT OF SELF INDUCTANCE USING ANDERSON'S BRIDGE****Date:****Aim:**

To measure the unknown self-inductance of the coil using Anderson's Bridge.

**Apparatus Required:**

S. No.	Components / Equipments	Specification	Quantity
1.	Resistors	1KΩ,1KΩ,560Ω,5.6KΩ	Each one
2.	Unknown Resistors	Different value	4
3.	Decade Inductance Box	---	1
4.	Digital Multimeter	---	1
5.	CRO	30 MHz	1
6.	Bread Board	---	1
7.	Connecting wires	---	Few

**Pre-Lab Exercise:**

1. Name the bridges used for inductance measurement.
2. Is Anderson's bridge is AC or DC bridge?
3. What are the detectors used in AC bridges?
4. input must be given to Anderson's bridge.

**Theory:**

The unknown inductance can be measured using the Anderson's bridge trainer. To measure any other value of inductance, the resistance  $r$  &  $r_1$  have to be correspondingly changed either by increasing or decreasing the resistance. The resistance in any of the arms of the bridge is increased by externally connecting some resistance in series or decreased by connecting in parallel for which the provision has been given in the trainer. The bridge consists of a built in power supply, 1 kHz oscillator & a detector.

**Balance Equations:**Let  $L_1$ =self-inductance to be measured $R_1$ =resistance of self-inductor $r_1$ =resistance connected in series with self-inductor $R, R_2, R_3, R_4$  = known non-inductive resistances $C$ =fixed standard capacitorAt balance  $I_1=I_3$  and  $I_2=I_c+I_4$ 

$$I_1 R_3 = I_c \times \frac{1}{j\omega C} \quad \therefore I_c = I_1 j\omega C R_3$$

*Writing the other balance equations*

$$I_1(r_1 + R_1 + j\omega L_1) = I_2 R_2 + I_c r \quad \text{and} \quad I_c \left( r + \frac{1}{j\omega C} \right) = (I_2 - I_c) R_4$$

*Substituting the value of  $I_c$  in the above equations, we have*

$$I_1(r_1 + R_1 + j\omega L_1) = I_2 R_2 + I_1 j\omega C R_3 r \quad \text{or} \quad I_1(r_1 + R_1 + j\omega L_1 - j\omega C R_3 r) = I_2 R_2 \quad \text{-----(1)}$$



$$j\omega CR_3 I_1 \left( r + \frac{1}{j\omega C} \right) = (I_2 - I_1 j\omega CR_3) R_4 \text{ or } I_1 (j\omega CR_3 r + j\omega R_3 R_4 + R_3) = I_2 R_2 \text{----- (2)}$$

From equations (1) and (2), we obtain

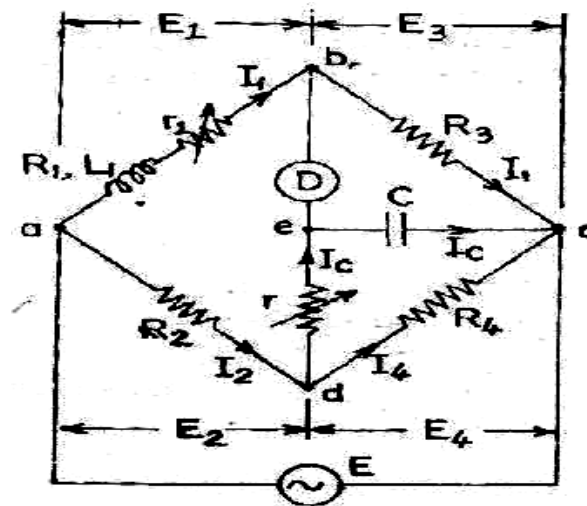
$$I_1 (r_1 + R_1 + j\omega L_1 - j\omega CR_3 r) = I_1 \left( \frac{R_2 R_3}{R_4} + \frac{j\omega CR_2 R_3 r}{R_4} + j\omega CR_3 R_2 \right)$$

Equating the real and imaginary parts

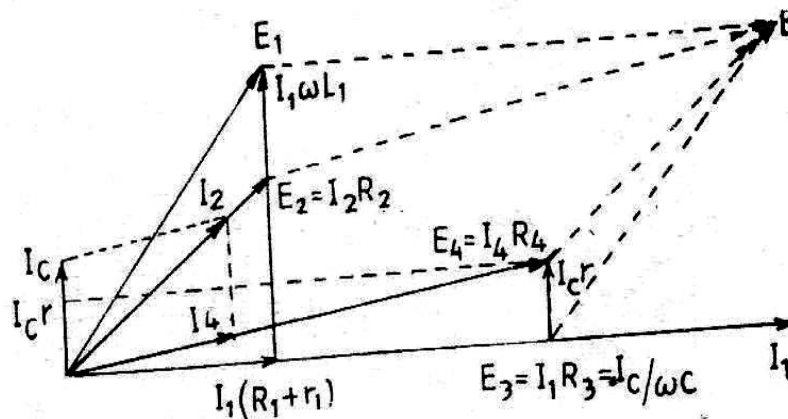
$$R_1 = \frac{R_2 R_3}{R_4} - r_1 \text{----- (3)}$$

$$\text{and } L_1 = C \frac{R_3}{R_4} [r(R_4 + R_2) + R_2 R_4] \text{----- (4)}$$

**Circuit Diagram:**



**Phasor Diagram:**



**Formula used:**

$$\% \text{ Error} = \frac{\text{Measured Value} - \text{True Value}}{\text{True Value}} \times 100$$

$$L_1 = C \frac{R_3}{R_4} [R(R_4 + R_2) + R_2 R_4] \quad R_1 = \frac{R_2 R_3}{R_4} - r_1$$

**Procedure:**

1. Switch on the trainer & connect the unknown inductance in the arm marked  $R_1$ .
2. Connect the CRO between the ground & the output point and check for the balance condition.
3. Observe the sine wave at the secondary of the isolation transformer by using CRO.
4. Vary the resistance  $R$  from minimum position in a clockwise direction.
5. For further fine balance vary the resistance  $r_1$  which will compensate for the resistive Component of the inductor.
6. Remove the wiring and measure the values of  $R$  and  $r_1$  using DMM.
7. The above steps (3, 4, 5&6) are repeated for different values of unknown inductance.

**Tabular Column:**

S. No	R( $\Omega$ )	r1 ( $\Omega$ )	R2( $\Omega$ )	R3( $\Omega$ )	R4( $\Omega$ )	R1( $\Omega$ )	$Q = \frac{\omega L_1}{R_1}$	L1(mH)		%Error
								True	Measured	

**Model Calculation:**

**Post-Lab Exercise:**

1. What do you mean by Q-factor? What is its significance?
2. What are the other bridges used to measure inductance?
3. State the merits and demerits of Anderson's bridge?
4. What will happen to the measured inductance value if frequency of the input is not maintained constant?
5. What are the limitations of Anderson Bridge?

**Result:**

Thus the unknown inductance of the coil is measured using Anderson's Bridge.

## Exp No.:4(b) MEASUREMENT OF CAPACITANCE USING SCHERING'S BRIDGE

Date:

### Aim:

To measure the value of unknown capacitance using Schering's bridge & dissipation factor.

### Apparatus required:

S. No.	Components / Equipments	Specification	Quantity
1.	Resistors	1K $\Omega$ , 1K $\Omega$ , 560 $\Omega$ , 5.6K $\Omega$	Each one
2.	Decade Resistance Box		
3.	Decade Conductance Box	---	1
4.	Digital Multimeter	---	1
5.	CRO	---	1
6.	Bread board	---	1
7.	Connecting wires	---	Few

### Pre-Lab Exercise:

1. Name the bridges used for capacitance measurement.
2. Why Schering's Bridge is called as AC bridge?
3. State the two conditions for balancing an AC bridge?
4. What kind of input should be applied to Schering's Bridge?

### Theory:

In this bridge the arm BC consists of a parallel combination of resistor & a Capacitor and the arm AC contains capacitor. The arm BD consists of a set of resistors varying from 1 $\Omega$  to 1 M $\Omega$ . In the arm AD the unknown capacitance is connected. The bridge consists of a built in power supply, 1 kHz oscillator and a detector.

### Balance Equations:

Let  $C_1$ =Capacitor whose capacitance is to be measured.

$R_1$ = a series resistance representing the loss in the capacitor  $C_1$ .

$C_2$ = a standard capacitor.

$R_3$ = a non-inductive resistance.

$C_4$ = a variable capacitor.

$R_4$ = a variable non-inductive resistance in parallel with variable capacitor  $C_4$ .

At balance,

$$Z_1 Z_4 = Z_2 Z_3$$

$$\left( r_1 + \frac{1}{j\omega C_1} \right) \left( \frac{R_4}{1 + j\omega C_4 R_4} \right) = \frac{1}{j\omega C_2} \cdot R_3$$

$$\left( r_1 + \frac{1}{j\omega C_1} \right) R_4 = \frac{R_3}{j\omega C_2} (1 + j\omega C_4 R_4)$$

$$r_1 R_4 - \frac{jR_4}{\omega C_1} = -j \frac{R_3}{\omega C_2} + \frac{R_3 R_4 C_4}{C_2}$$

Equating the real and imaginary terms, we obtain

$$r_1 = R_3 \frac{C_4}{C_2} \quad \text{and}$$

$$C_1 = C_2 \frac{R_4}{R_3}$$

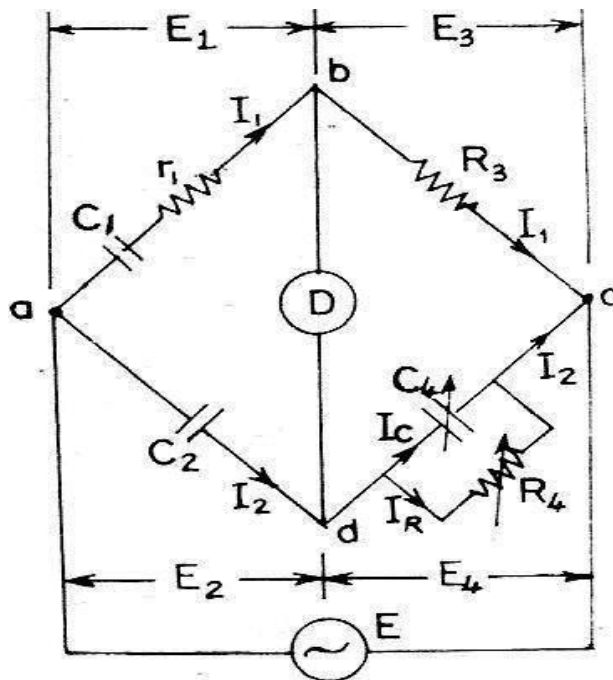
Two independent balance equations are obtained if  $C_4$  and  $R_4$  are chosen as the variable elements.

**Dissipation Factor:**

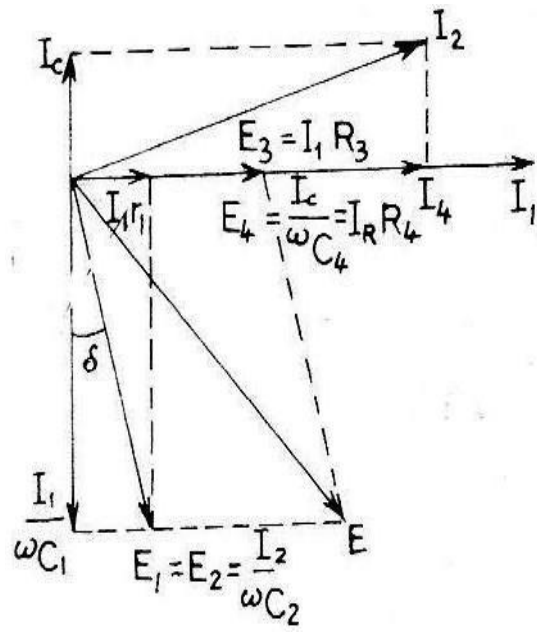
The dissipation factor of a series RC circuit is defined as a co-tangent of the phase angle and therefore by definition the dissipation factor is

$$D_1 = \tan \delta = \omega C_1 r_1 = \omega \left( \frac{C_2 R_4}{R_3} \right) \times \left( \frac{R_3 C_4}{C_2} \right) = \omega C_4 R_4$$

Circuit Diagram:



**Phasor Diagram:**



**Formulae Used:**

$$\% \text{ Error} = \frac{\text{Measured Value} - \text{True Value}}{\text{True Value}} \times 100$$

$$r_1 = R_3 \frac{C_4}{C_2} \quad , C_1 = C_2 \frac{R_4}{R_3} \quad \& \quad D_1 = \omega C_4 R_4 \quad \text{where } C_4 = C_x \& R_4 = R_x$$

**Procedure:**

1. Switch on the trainer board and connect the unknown in the arm marked C<sub>x</sub>.
2. Observe the sine wave at the output of oscillator and patch the ckt by using the wiring diagram.
3. Observe the sine wave at secondary of isolation transformer on CRO. Select some value of R<sub>2</sub>.
4. Connect the CRO between ground and the output point of imbalance amplifier.
5. Vary R<sub>1</sub> ( 500 ohms potentiometer ) from minimum position in the clockwise direction.
6. If the selection of R<sub>2</sub> is correct, the balance point (DC line) can be observed on CRO. (That is at balance the output waveform comes to a minimum voltage for a particular value of R<sub>1</sub> and then increases by varying R<sub>1</sub> in the same clockwise direction). If that is not the case, select another value of R<sub>2</sub>.
7. Capacitor C<sub>1</sub> is also varied for fine balance adjustment. The balance of the bridge can be observed by using loud speaker.
8. Connect the loud speaker at the output of the detector. Alternatively adjust R<sub>1</sub> and proper selection of R<sub>2</sub> for a minimum sound in the loud speaker.
9. Tabulate the readings and calculate the unknown capacitance and dissipation factor.

**Tabular Column:**

S.No.	C <sub>1</sub> (pF)	C <sub>3</sub> (μF)	R <sub>1</sub> (Ω)	R <sub>2</sub> (Ω)	R <sub>x</sub> (Ω)	C <sub>x</sub> (μF)		Dissipation factor (D <sub>1</sub> )
						True value	Measured Value	

**Model Calculation:****Post-Lab Exercise:**

1. Explain how Schering's Bridge is used for measuring capacitance?
2. What do you mean by dissipation factor?
3. Give the relationship between Q and D.
4. Derive the balance equations.
5. What are the limitations of Schering's bridge?

**Result:**

Thus the unknown capacitance & dissipation factor were measured using Schering's Bridge.

**Ex.No: 5      DESIGN OF INSTRUMENTATION AMPLIFIER**

**Date :**

**AIM:**

To design an instrumentation amplifier

**APPARATUS REQUIRED:**

S.No.	Components	Specification	Quantity
1.	Op-Amp	IC 741	3
2.	Resistor	1 KΩ	6
3.	Regulated Power Supply	(0-30)V	2
4.	Decade Resistance Box	-	1
5.	Bread Board	-	1
6.	Connecting Wires	-	Few

**THEORY:**

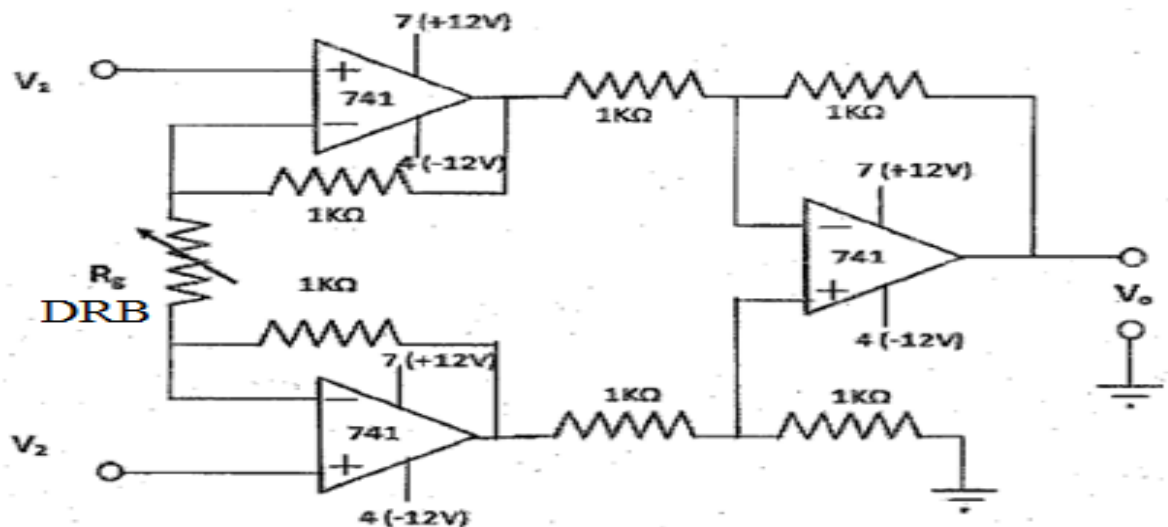
In industrial and consumer applications, the physical quantities such as temperature, pressure, humidity, light intensity, water flow etc is measured with the help of transducers. The output of transducer has to be amplified using instrumentation so that it can drive the indicator or display system. The important features of an instrumentation amplifier are 1) high accuracy 2) high CMRR 3) high gain stability with low temperature coefficient 4) low dc offset 5) low output impedance.

The circuit diagram shows a simplified differential instrumentation amplifier. A variable resistor (DRB) is connected in one arm, which is assumed as a transducer in the experiment and it is changed manually. The voltage follower circuit and a differential OP-AMP circuit are connected as shown.

**PROCEDURE:**

1. Give the connections as per the circuit diagram.
2. Switch on the RPS
3. Set  $R_g$ ,  $V_1$  and  $V_2$  to particular values
4. Repeat Step 3 for different values of  $R_g$ ,  $V_1$  and  $V_2$
5. Calculate the theoretical output voltage using the given formula and compare with practical value.

**CIRCUIT DIAGRAM : INSTRUMENTATION AMPLIFIER**



**OBSERVATION:**

S.No	V1	V2	V <sub>d</sub> = (V1-V2) Volts	V <sub>o</sub> (Practical)	Gain A= V <sub>out</sub> / V <sub>d</sub>	V <sub>o</sub> (Theoretical)

**FORMULA:**

$$V_o = -\left(\frac{R_2}{R_1}\right)\left(1 + \frac{2R}{R_g}\right)V_d$$

$$V_o = A * V_d$$

Where

$$-\left(\frac{R_2}{R_1}\right)\left(1 + \frac{2R}{R_g}\right) = A$$

**MODEL CALCULATIONS:**

**REVIEW QUESTIONS:**

1. What is the difference between instrumentation amplifier and differential amplifier?
2. What are the characteristics of instrumentation amplifier?
3. What is CMRR?
4. What are the applications of instrumentation amplifier?
5. What is the other name of instrumentation amplifier?

**RESULT:**

Thus, the design of an instrumentation amplifier was completed



Exp No.:6

## CHARACTERISTICS OF STRAIN GAUGE

Date:

### Aim:

To study the characteristics of strain gauge.

### Apparatus required:

S. No.	Components / Equipment	Specification	Quantity
1.	Strain Gauge Kit	---	1
2.	Digital Multimeter	---	1
3.	Standard weights	100g, 200g & 500g	1,2 & 1

### Pre-Lab Exercise:

1. What is the principle employed in measurement using strain gauge?
2. Strain gauge \_\_\_\_\_ type of sensor.
3. What is meant by gauge factor.
4. What is the difference between active and passive transducer?
5. What are the types of strain gauges?
6. What is Rosettes?

### Theory:

If a metal conductor is stretched or compressed, its resistance changes on account of the fact that both length and diameter of conductor change. Also there is a change in the value of resistivity of the conductor when it is strained and this property is called piezo resistive effect. Therefore, resistance strain gauge is also known as piezo resistive gauges. The strain gauges are used for measurement of strain and associated stress in experimental stress analysis.

The change in the value of resistance by straining the gauge may be partly explained by the normal dimensional behavior of elastic material. If a strip of elastic material is subjected to tension or in other words positively strained, its longitudinal dimension will increase while there will be reduction in the lateral dimension. So, when a gauge is stretched to a positive strain, its length increases while its area of cross section decreases. Since the resistance of the conductor is proportional to its length and inversely proportional to its area of cross section the resistance of the gauge increases with positive strain. The extra change in the value of resistance is attributed to a change in the value of resistivity of a conductor when strained.

Let us consider in the case the value of resistance is attributed to a change in the value of resistivity. Length = L, area = A, diameter = D before strained. The material of the wire has a resistivity  $\rho$  Therefore resistance of a strained gauge  $R = \rho L/A$ . Let a tensile stress S be applied to the wire. This produces a positive strain. The length is to increase and area to decrease. Let  $\Delta L$  = change in length,  $\Delta A$  = change in area,  $\Delta D$  = change in diameter and  $\Delta R$

= change in resistance

$$\frac{dR}{ds} = \frac{\rho}{A} \cdot \frac{\partial L}{\partial s} - \frac{\rho L}{A^2} \cdot \frac{\partial A}{\partial s} + \frac{L}{A} \frac{\partial \rho}{\partial s} \dots \dots \dots (1)$$

Divide by resistance  $R = \frac{L}{A}$ , we have

$$\frac{1}{R} \frac{dR}{ds} = \frac{1}{L} \frac{\partial L}{\partial s} - \frac{1}{A} \frac{\partial A}{\partial s} + \frac{1}{\rho} \frac{\partial \rho}{\partial s} \dots\dots\dots(2)$$

It is evident from the equation 2, that the per unit change resistance is due to

- (i) per unit change length in length =  $\Delta L/L$
- (ii) per unit change in area =  $\Delta A/A$
- (iii) per unit change in resistivity =  $\Delta \rho / \rho$

$$\text{Area } A = \frac{\pi}{4} D^2 \quad \therefore \frac{\partial A}{\partial s} = 2 \cdot \frac{\pi}{4} D \cdot \frac{\partial D}{\partial s} \dots\dots\dots(3)$$

$$\frac{1}{A} \frac{dA}{ds} = \frac{(2\pi/4) D}{(\pi/4) D^2} \frac{\partial D}{\partial s} = \frac{2}{D} \frac{\partial D}{\partial s} \dots\dots\dots(4)$$

Equation 2 can be written as

$$\frac{1}{R} \frac{dR}{ds} = \frac{1}{L} \frac{\partial L}{\partial s} - \frac{2}{D} \frac{\partial D}{\partial s} + \frac{1}{\rho} \frac{\partial \rho}{\partial s} \dots\dots\dots(5)$$

$$\text{Now poisson's ratio} = \frac{\text{lateral strain}}{\text{longitudinal strain}} = - \frac{\partial D/D}{\partial L/L} \dots\dots\dots(6)$$

$$\frac{\partial D}{D} = -\nu \times \frac{\partial L}{L}$$

$$\frac{1}{R} \frac{dR}{ds} = \frac{1}{L} \frac{\partial L}{\partial s} + \nu \frac{2}{L} \frac{\partial L}{\partial s} + \frac{1}{\rho} \frac{\partial \rho}{\partial s} \dots\dots\dots(7)$$

For a small variation, the above relationship can be written as

$$\frac{\Delta R}{R} = \frac{\Delta L}{L} + 2\nu \frac{\Delta L}{L} + \frac{\Delta \rho}{\rho} \dots\dots\dots(8)$$

The gauge factor is defined as the ratio of per unit change in resistance to per unit change in length. Gauge factor  $G_f = \frac{\Delta R/R}{\Delta L/L} \dots\dots\dots(9)$

$$\frac{\Delta R}{R} = G_f \frac{\Delta L}{L} = G_f \times \epsilon \dots\dots\dots(10)$$

$\epsilon = \text{Strain} = \frac{\Delta L}{L}$ . The gauge factor can be written as

$$G_f = \frac{\Delta R/R}{\Delta L/L} = 1 + 2\nu + \frac{\Delta \rho / \rho}{\Delta L / L} \dots\dots\dots(11)$$

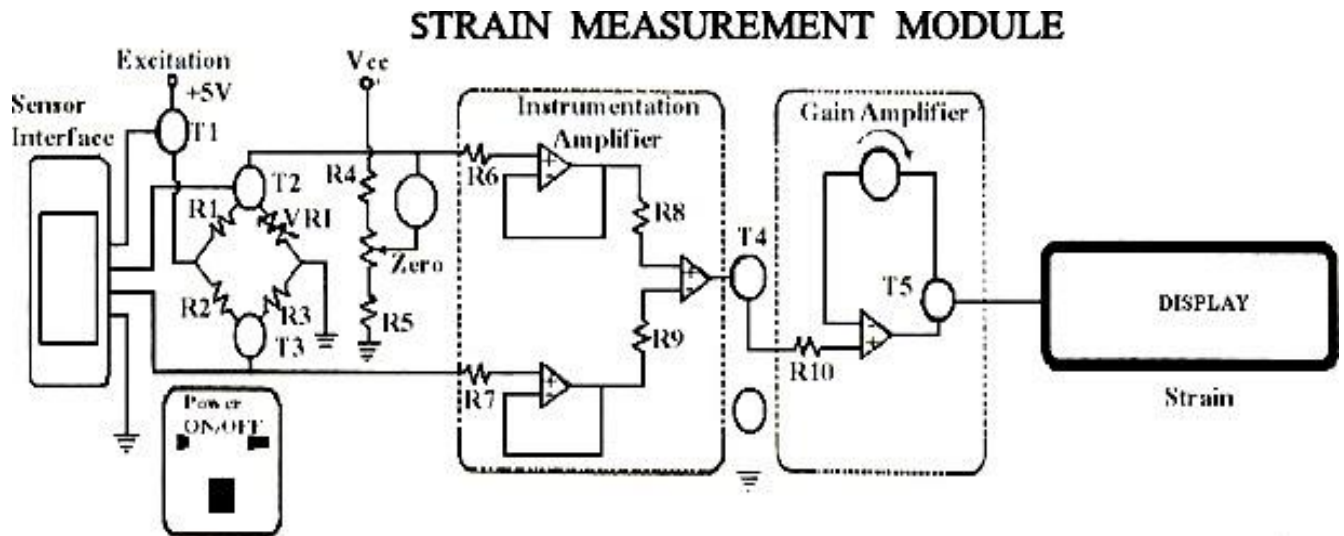
If the change in the value of resistivity of a material when strained is neglected, the gauge factor is

$$G_f \approx 1 + 2\nu \dots\dots\dots(12)$$

The equation 12 is valid only for piezo electric effect. The poisson ratio for all metals is found to be between 0 and 0.5. This gives a gauge factor of approximately 2. The common values of gauge factor for wire wound strain gauges are:

<b>Material</b>	<b>Gauge factor</b>	<b>Material</b>	<b>Gauge factor</b>
Nickel	- 12.1	Platinum	+ 4.8
Manganin	+ 0.47	Carbon	+ 20
Nichrome	+ 2.0	Doped crystals	100 to 5000
Constantan	+ 2.1	Soft iron	+ 4.2

**Module Diagram:**



**Procedure:**

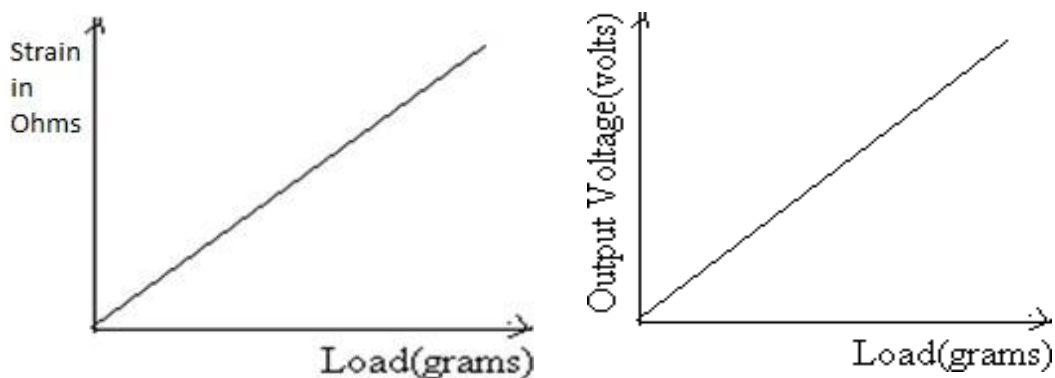
1. Connect the trainer with the load applying column.
2. Connect the multimeter at the output terminal.
3. Switch ON the kit.
4. Initially at no load, zero adjustment has to be done.
5. Gradually increase the load and note down the corresponding output voltage.

**Graph:** Plot the graph: Strain Vs Load and Output Voltage Vs Load.

**Tabular column:**

S.No.	Load (g)	Strain ( $\Omega$ )		% error	Output Voltage (V)
		Theoretical	Practical		

**Model graph:**



**Post-Lab Exercise:**

1. State piezoresistive effect.
2. What is the importance of gauge factor of a strain gauge?
3. What are the applications of strain gauges?
4. Define Poisson's ratio.
5. What are the advantages of semiconductor strain gauge?
6. What are the disadvantages of semiconductor strain gauges?

**Result:**

Thus the characteristics of strain gauge were studied and the graphs were plotted for different weights.

**Ex.No.:7**

## **CALIBRATION OF WATTMETER**

**Date :**

**AIM:** To calibrate the given Wattmeter by direct loading and obtain its percentage error.

**APPARATUS REQUIRED:**

<b>S. No.</b>	<b>Components / Equipment</b>	<b>Specification</b>	<b>Quantity</b>
1.	Wattmeter	300V, 10A, UPF	1
2.	Voltmeter (MI)	0-300V	1
3.	Ammeter (MI)	0-10A	1
4.	Lamp Load	230V, 3KW	1
5.	Connecting wires	---	Few

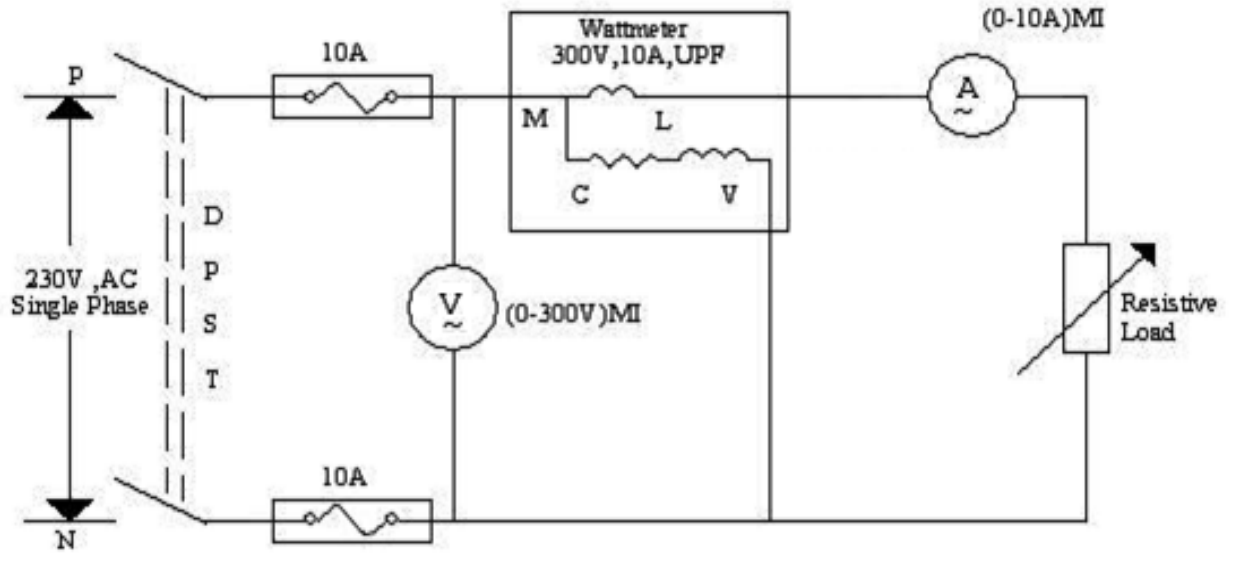
**THEORY:**

In Electro Dynamometer wattmeter there are 2 coils connected in different circuits to measure the power. The fixed coil or held coil is connected in series with the load and so carry the current in the circuit. The moving coil is connected across the load and supply and carries the current proportional to the voltage. The various parts of the wattmeter are 1. Fixed coil and Moving coil 2.. Controlling springs and Damping systems 3. Pointer Here a spring control is used for resetting the pointer to the initial position after the de-excitation of the coil. The damping system is used to avoid the overshooting of the coil and hence the pointer. A mirror type scale and knife edge pointer is provided to remove errors due to parallax.

**PROCEDURE:**

1. Connections are given as per the circuit diagram.
2. Power supply is switched on and the load is turned on.
3. The value of the load current is adjusted to the desired value.
4. The readings of the voltmeter, ammeter & wattmeter are noted.
5. The procedure is repeated for different values of the load current and for each value of load current all the meter readings are noted.

**CIRCUIT DIAGRAM:**



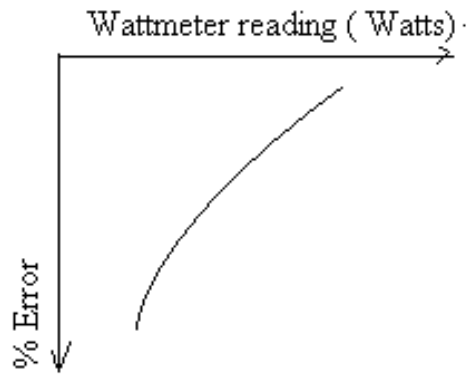
**TABULATION**

S.No	Voltmeter reading (Volts)	Ammeter Reading (Amp)	Wattmeter Reading (Watt)		% Error
			Measured	True value $P = V \cdot I$	

**FORMULA USED:**

$$\% \text{ Error} = \frac{\text{True value} - \text{Measured value}}{\text{True Value}} \times 100$$

### MODEL GRAPH:



### MODEL CALCULATION:

### REVIEW QUESTIONS

1. What do you mean by calibration
2. What are the common errors in Wattmeter?
3. Can we Measure power using one Wattmeter in a 3-Phase supply?
4. How do we measure Reactive Power.?
5. How do you compensate Pressure coil in Wattmeter?

### RESULT:

Thus the calibration of given Wattmeter was obtained using by direct loading



Ex.No: 8

## CALIBRATION OF SINGLE-PHASE ENERGY METER

Date :

**AIM:** To calibrate the given energy meter using a standard wattmeter and to obtain percentage error.

**APPARATUS REQUIRED:**

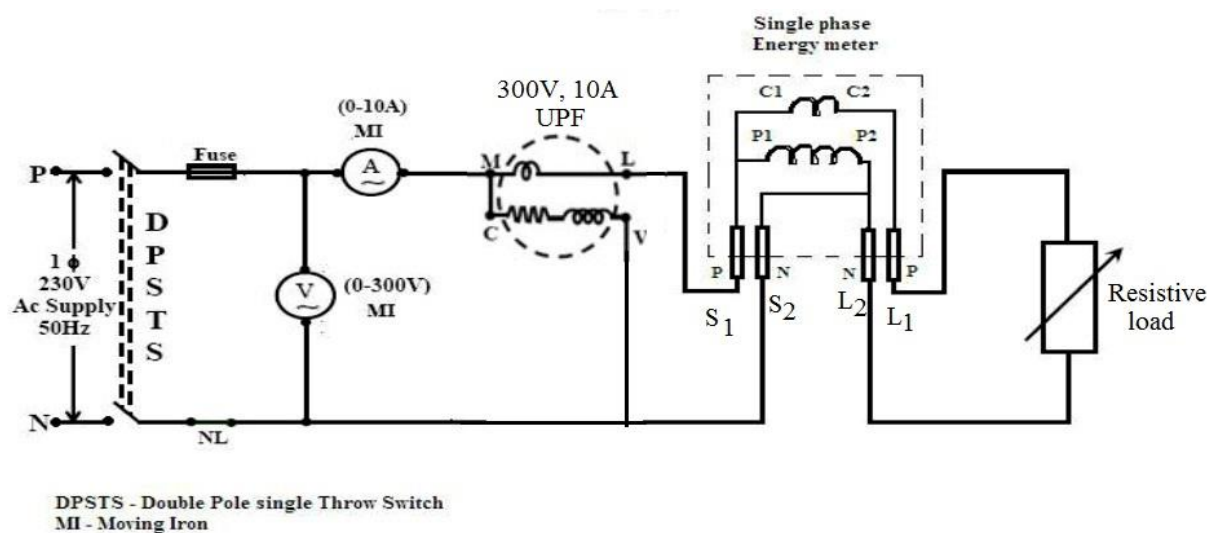
S. No.	Components / Equipments	Specification	Quantity
	Energy Meter	Single Phase	1
	Standard Wattmeter	300V, 10A, UPF	1
	Voltmeter (MI)	0-300V	1
	Ammeter (MI)	0-10A	1
	Lamp Load	230V, 3KW	4

**THEORY:**

The energy meter is an integrated type instrument where the speed of rotation of aluminium disc is directly proportional to the amount of power consumed by the load and the no of revs/min is proportional to the amount of energy consumed by the load. In energy meter the angular displacement offered by the driving system is connected to the gearing arrangement to provide the rotation of energy meter visually. The ratings associated with an energy meter are 1. Voltage Rating 2. Current Rating 3. Frequency Rating 4. Meter Constants.

Based on the amount of energy consumption, the driving system provides rotational torque for the moving system which in turn activates the energy registering system for reading the real energy consumption. The energy meter is operated based on induction principle in which the eddy current produced by the induction of eddy emf in the portion of the aluminium disc which creates the driving torque by the interaction of 2 eddy current fluxes.

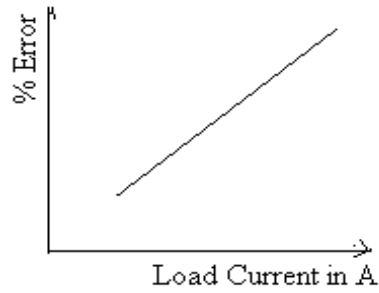
**CIRCUIT DIAGRAM**



**TABULATION:**

Voltmeter Reading, V (Volt)	Ammeter Reading, I (Amp)	Wattmeter Reading, W (Watt)	Time Period, t (Sec)	No. of revolution s	Energy Reading (kwh) Meter		% Error
					Measured	True	

**MODEL GRAPH:**



**MODEL CALCULATION:**

**PROCEDURE:**

1. Connections are given as per the circuit diagram.
2. The DPST switch is closed to give the supply to the circuit.
3. The load is switched on.
4. Note down the ammeter, voltmeter & wattmeter reading .Also note down the time taken for 5 revolutions for the initial load.
5. The number of revolutions can be noted down by adapting the following procedure. When the red indication mark on the aluminium disc of the meter passes, start to count the number of revolutions made by the disc by using a stop watch and note it down.

Repeat the above steps (4) for different load currents by varying the load for the fixed number of revolutions.

**FORMULA USED:**

$$\% \text{ Error} = \frac{\text{True Value} - \text{Measured Value}}{\text{True Value}} \times 100$$

Wattmeter Reading(P) = VI watts  
True Energy= No. of revolutions/Energy Meter Constant

$$\text{Measured Energy} = \frac{VI \cos\phi t}{3600} = \text{wattmeter reading} \times \text{time period (kwh)}$$

**REVIEW QUESTIONS**

1. What do you meant by calibration?
2. What is the need for lag adjustment devices in single phase energy meter?
3. How damping is provided in energy meter?
4. What is "Creep" in energy meter? What are the causes of creeping in an energy meter?
5. How is creep effect in energy meters avoided?

**RESULT:**

Thus, the calibration of given energy meter was obtained using a standard wattmeter

## Exp No.:9 (a) MEASUREMENT OF SKIN TEMPERATURE – CONTACT METHOD

Date:

### Aim:

To measure temperature of the skin using the contact method and also to determine the average skin temperature of human.

### Apparatus Required:

Mercury Thermometer  
Electronic Thermometer

### Pre-Lab Exercise:

1. What is the normal skin temperature of human?
2. List the contact type thermometers.
3. How filled in system thermometer works?
4. What is the disadvantage of mercury filled thermometer?
5. Which is the most commonly used thermometer?

### Theory:

Thermometer can be used to check the body temperature to see whether a person has a fever. There are two ways to measure body temperature that is by measuring core temperature and surface temperature.

Core temperature measurement means, measurement of temperature in deep tissues such as oral cavity, ear canal, and rectum.

Surface temperature measurement means, measurement of temperature in surface skin tissues such as forehead and armpit.

Since surface temperature is more susceptible to changes in the surroundings, it is considered less accurate and is recommended for use only when there is difficulty in measuring the core temperature.

### **Mercury-in-glass/ Alcohol-in-glass Thermometer**

Thermal expansion property of mercury / alcohol is used for skin temperature measurement. These thermometers can be used to measure oral, rectal or armpit body temperature through the thermal expansion of mercury/ ethanol.



As mercury spill is hazardous to environment and health, the use of mercury thermometer should be avoided as far as possible.

The tips of oral thermometer and rectal thermometer are different in shape (slender vs. round) and must not be cross-used.



## Electronic (digital) Thermometer

Measures oral, rectal or armpit body temperature by means of thermistor with its resistance varying according to the temperature. Temperature difference among oral, rectal and armpit body temperature should be noted.



### Proper Use of Thermometer:

1. Compare the accuracy, suitability, convenience and price of thermometers before purchase.
2. Choose a thermometer and method of measurement which suit the individual's age and health condition; Consult healthcare professionals if in doubt.
3. Patients with communicable diseases should use personal thermometers to avoid cross-infection.
4. Familiarize with the correct use of thermometer and temperature reading by referring to the user instructions provided by manufacturer.
5. Avoid activities that would distort temperature measurement (e.g. drinking hot water immediately before taking oral temperature).
6. Clean and maintain the thermometer according to the procedures recommended by the user instructions.
7. In case body temperature needs to be taken regularly, take the temperature at the same time of each day and use the same temperature taking method to allow comparison.
8. If there is any doubt about the body temperature reading, please consult healthcare professionals.

### Measurement Methods and Specific Precautions:

Measurement method	Unsuitable conditions for the measurement method
Oral	<ul style="list-style-type: none"><li>● Suffering from shortness of breath</li><li>● Sneezing repeatedly, having a hard cough or suffering a seizure</li><li>● Unconscious or confused</li><li>● Unable to close the mouth tightly</li></ul>
Ear	<ul style="list-style-type: none"><li>● Having a middle ear infection</li><li>● Obstruction of ear canal by ear wax</li><li>● Wearing hearing aid</li></ul>
Rectal	<ul style="list-style-type: none"><li>● Large amount of faeces accumulated in the rectum</li><li>● Rectal diseases, e.g. haemorrhoid or diarrhoea, etc.</li><li>● Just undergone intestinal operation</li><li>● Having wounds/ lesions in the anus</li></ul>
Armpit	<ul style="list-style-type: none"><li>● Unable to secure thermometer under the axilla</li></ul>
Forehead	<ul style="list-style-type: none"><li>● Forehead being covered (e.g. by bandage/ cooling gel sheet)</li></ul>

## Comparison Among Different Measurement Methods:

Measurement method	Oral	Ear	Rectal	Forehead	Armpit
<b>Suitability</b>					
Infants and children below 6		✓	✓	✓	✓
Adults and children above 6	Cooperative	✓	✓	✓	✓
	Uncooperative		✓	✓	
	Unconscious		✓	✓	✓
Accuracy	☹ ☹ ☹	☹ ☹ ☹	☹ ☹ ☹	☹	☹ ☹
Convenience and speed	☺ ☺ ☺	☺ ☺ ☺	☺	☺ ☺ ☺ ☺	☺ ☺
Reference level for fever	> 37.5°C (99.5°F)	> 38°C (100.4°F)	> 38°C (100.4°F)	> 36°C# (96.8°F)	> 37.3°C (99.1°F)

### Procedure:

#### Mercury-in-glass/ Alcohol-in-glass Thermometer

1. Thermometer should be reset by shaking the mercury/ ethanol level down below 35°C (95°F) each time before using.
2. Place thermometer at oral, rectal or armpit for a while and note down the temperature.

#### Electronic (digital) Thermometer

Temperature difference among oral, rectal and armpit body temperature should be noted.

### Tabular Column:

S.No.	Name of Person	Temperature (°C)	
		Oral	Armpit
<b>Average Body Temperature of Human</b>			

### Post-Lab Exercise:

1. How body temperature is measured?
2. Why surface skin tissue temperature measurement alone is not sufficient to determine body temperature?
3. What are the components needed in fabricating electronic thermometer?
4. What is the principle employed in electronic thermometers?
5. Mention the precautions to be considered in oral and armpit method.
6. Is forehead method suitable for contact method? Justify your answer.
7. What are the recommended methods for contact type body temperature measurement?

### Result:

Thus the skin temperature and also the average skin temperature of human is measured using contact method of measurement.

## Exp No.:9 (b) MEASUREMENT OF SKIN TEMPERATURE – NON-CONTACT METHOD

Date:

### Aim:

To measure temperature of the skin without contact using fiber optic temperature sensor (Infrared Thermometer) and to compare it with contact method.

### Apparatus Required:

Fibre optic temperature measurement unit  
Mercury thermometer or Electronic thermometer

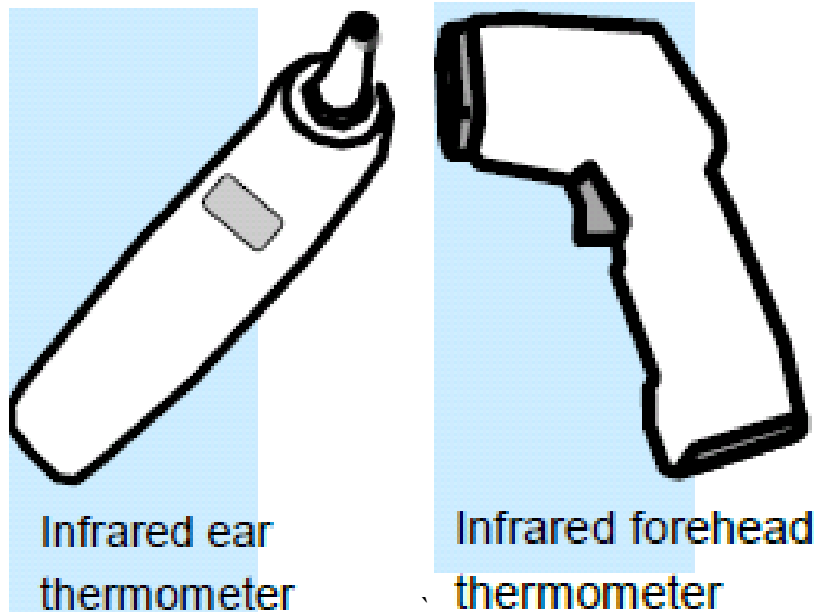
### Pre-Lab Exercise

1. What are the measuring methods used for non-contact method?
2. Is non-contact method is accurate?
3. What is the purpose of non-contact method of temperature measurement?
4. What is the advantage of non-contact method?
5. What is meant by refractive index?

### Theory:

Non-contact infrared temperature sensors measures thermal radiation (infrared) emitted from ear and forehead to infer body temperature

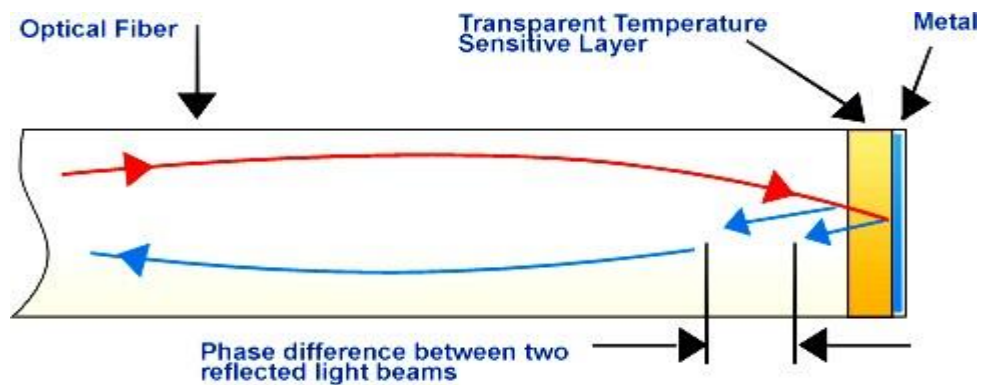
For ear thermometer, a new ear-probe jacket should be used for different person; the ear canal must be pulled straight when measuring.



Forehead thermometer should only be used for screening instead of diagnostic purpose due to greater measurement error.

Fibre optic temperature sensor consists of fibre optic assembly, infrared detector and electronic console. Thermal radiation emitted from human body falls in IR spectrum. This radiation proportional to temperature is introduced along optical fibre. As fibres sensitive only to IR portion of the spectrum, single or several fibres gathers the IR radiation from hot skin surface. Infrared detector converts detected IR signal radiated from skin into voltage and is calibrated to temperature scale using electronic console

Fiber optic temperature sensor using Phase interference:



**Procedure:**

1. Note temperature measured using non-contact method for different persons
2. Note temperature measured using contact method for the same set of persons
3. Compute the error in non-contact method with reference to contact method.

**Tabular Column:**

S.No.	Observed Temperature ( <sup>0</sup> C)		Error in Temperature ( <sup>0</sup> C)
	Non-contact method	Contact method	

**Post-Lab Exercise**

1. What is the principle of fiber optic sensor?
2. Write the advantages of fiber optic sensor.
3. What are the elements present in non-contact fibre optic temperature sensor?
4. Radiation from hot human body falls in ----- spectrum.
5. How fiber optic helps in effectively sensing human temperature?
6. What is the function of IR detector and electronic console?

**Result:**

Thus the measurement of temperature of skin is done using non-contact method and it is compared with contact method.



Exp No.:10 (a)

## CHARACTERISTICS OF THERMISTOR

Date:

**Aim:**

To determine the characteristics of thermistor.

**Apparatus Required:**

S. No.	Components / Equipments	Specification	Quantity
1.	Thermistors	---	1
2.	Digital Multimeter	---	1
3.	Thermometer	Max. 100 °C	1
4.	Water Bath	---	1

**Pre-Lab Exercise:**

1. What is thermistor?
2. Name the different temperature transducers.
3. Give naming convention of thermistor.
4. What are the materials used for constructing thermistor?
5. What is meant by temperature coefficient of resistance?

**Theory:**

Thermistors are semiconductors with high negative temperature coefficient of resistance. The high sensitivity of the thermistor makes it useful for precision temperature measurement. Oxides of titanium and nickel are among the materials used. They are very sensitive with temperature coefficients that range from -2 to -6Ω /°C. They are capable of detecting minute changes in temperature. Their resistance at 25°C ranges from 100Ω to 100KΩ with 5000Ω being a very common value. Their linearity is the poorest of those of all temperature sensors. The usual range of thermistors is from -200°C to 1000°C. A single thermistor cannot be used over such a large range.

**For Thermistor**

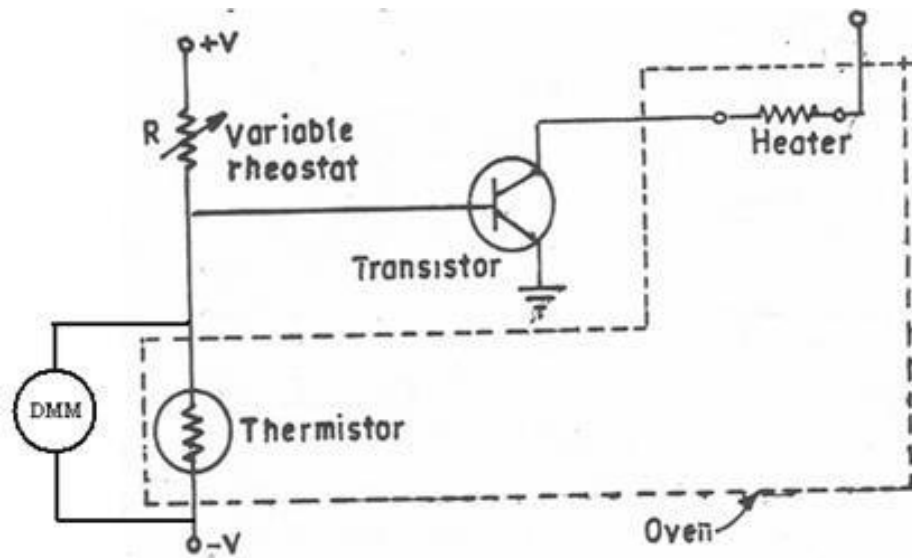
$$R_T = R_0 e^{\beta \left[ \left( \frac{1}{T} \right) - \left( \frac{1}{T_0} \right) \right]}$$

$R_T$  - Resistance of thermistor at T deg K

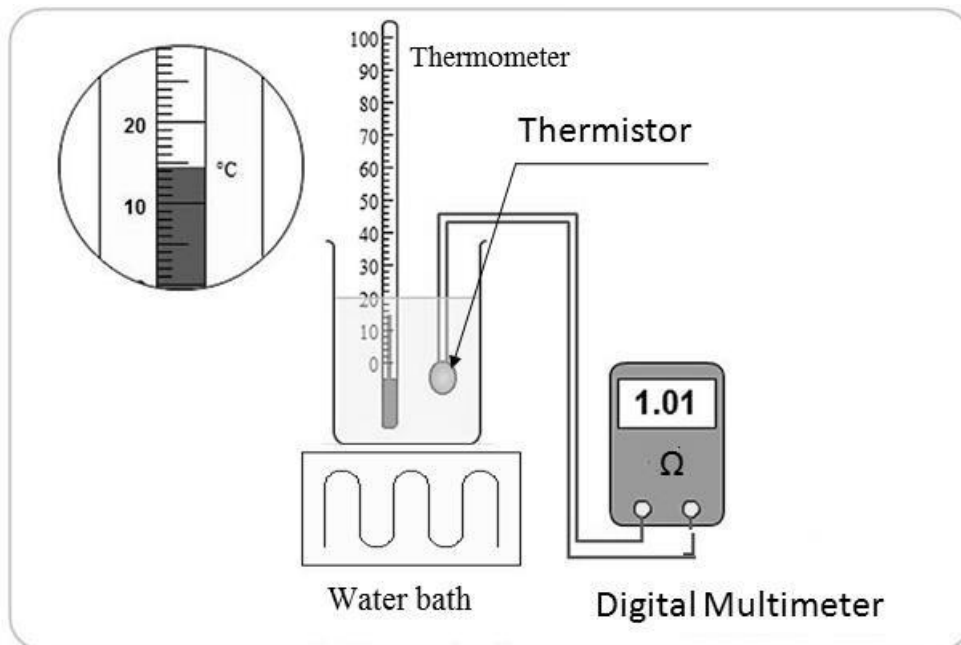
$R_0$  - Resistance at room temperature

$\beta$  - Thermistor constant

**Circuit Diagram:**



**Experiment setup:**



**Procedure:**

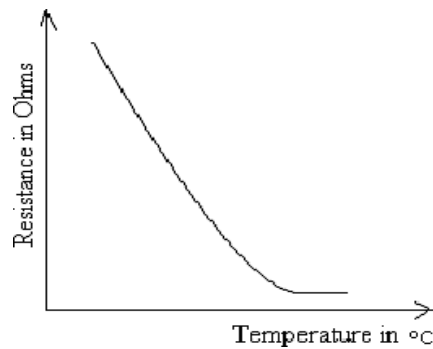
1. Immerse the thermistor & thermometer into the water bath.
2. Connect the leads from the thermistor to the multimeter.
3. Switch ON the water bath.
4. Measure the temperature using the thermometer of water and the corresponding resistance of thermistor using multimeter.
5. For every 5 °C rise, the reading on the thermistor and thermometer are noted until the temperature reaches the max. temperature(100 °C).

**Graph:** Plot the graph between Temperature (X-axis) and Output Resistance (Y-axis).

**Tabular Column:**

S.No.	Temperature (°C)	Output Resistance (kΩ)

**Model graph:**



**Post-Lab Exercise:**

1. What is the temperature range of thermistor?
2. Is temperature coefficient of resistance is positive or negative for thermistor? Justify your answer.
3. What is the difference between RTD and thermistor?
4. What about resolution and sensitivity of thermistor?
5. What are the advantages of thermister over other temperature transducers?
6. What are the applications of thermistor?

**Result:**

Thus the characteristics of thermistor is determined and the graph is plotted.

**Exp No.:10 (b) CHARACTERISTICS OF THERMOCOUPLE****Date:****Aim:**

To study the characteristics of Thermocouple.

**Apparatus Required:**

S. No.	Components / Equipments	Specification	Quantity
1.	Thermocouple	---	1
2.	Digital Multimeter	---	1
3.	Thermometer	Max. 100°C	1
4.	Water Bath	---	1

**Pre-Lab Exercise:**

1. State the principle employed in thermocouple.
2. Is thermocouple is active or passive transducer? Justify your answer.
3. What are the materials used for fabricating thermocouple?
4. What are the different types of thermocouples?
5. What is the function of signal conditioning circuit?

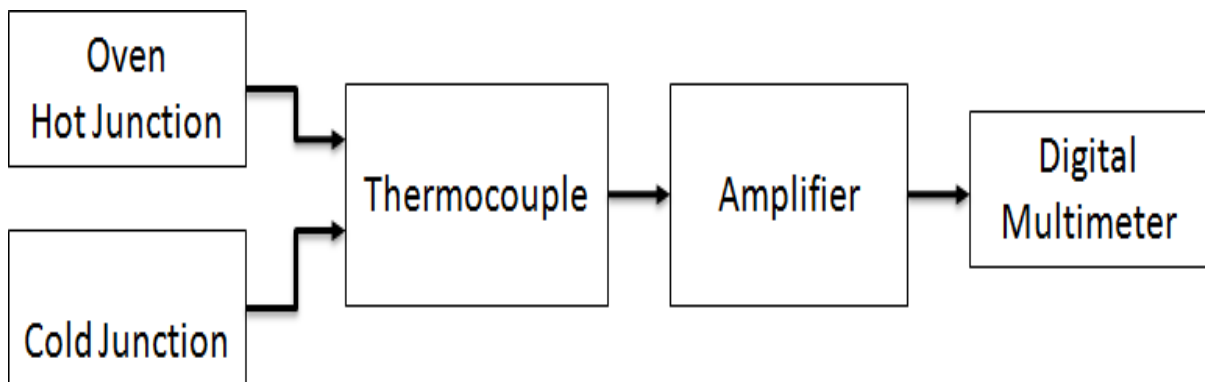
**Theory:**

Thermocouple is a temperature transducer based on seebeck effect. It is the most common and widely used single device for temperature measurement in industrial applications. Its measurements cover the temperature range of 0°F to 4000°F. Thermocouple is a self-generating transducer and it has a pair of dissimilar metallic conductors .If this dissimilar metallic conductor are connected in a circuit with one junction at  $T_1$  and the other at  $T_2$ , an emf is developed due to difference in temperature. The relation between E,  $T_1$  and  $T_2$  is called the Seebeck effect. Commonly used materials in the thermocouple are Platinum, Rhodium, Chromel, Alumel, Copper–Constantan and Iron–Constantan. The range of chromel•constantan is 700 to 1200 °C.

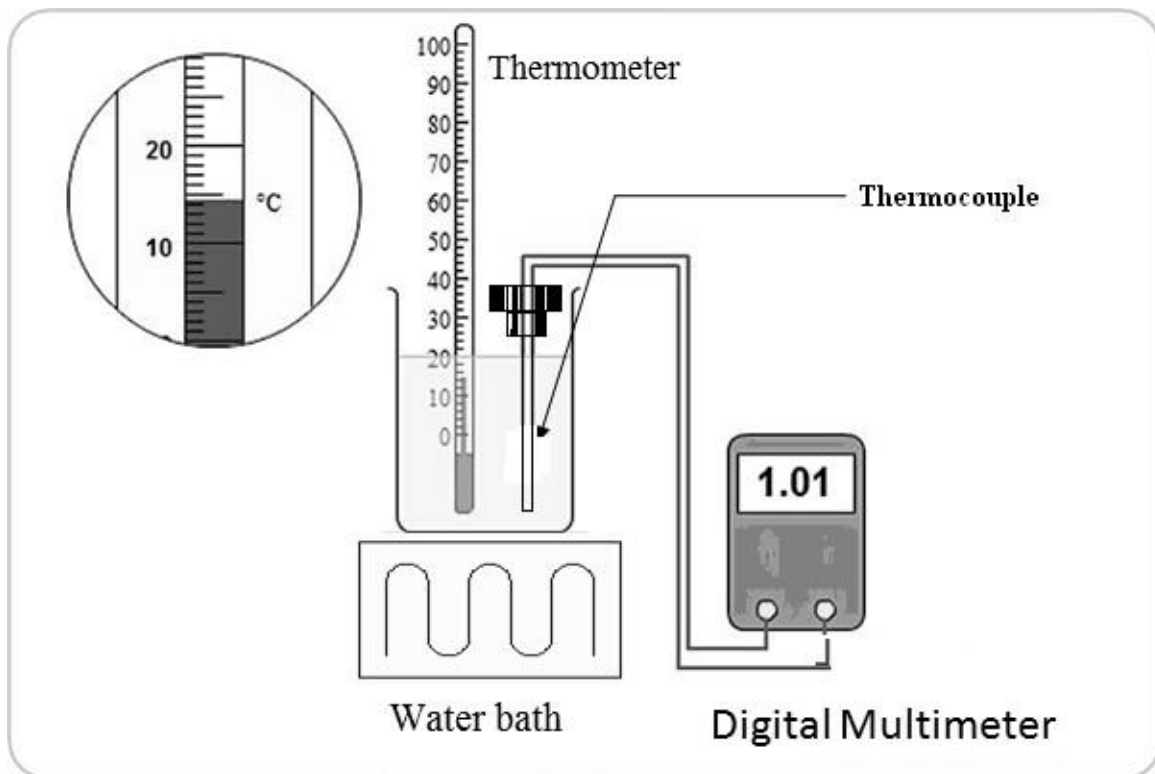
The cold junction of thermocouple is taken as the reference junction and its temperature is kept constant. The hot junction is kept at the place where temperature is to be measured. In lab, it is possible to keep the temperature of cold junction constant but in industries it is not possible. So the variation in thermos emf of thermocouple due to variation in cold junction temperature is to be compensated for exact temperature measurement. Here the compensation is made using Wheatstone bridge in which RTD is placed at one of its arms. Thermocouple output is connected to the non-inverting terminal of operational amplifier. The gain of the amplifier is set to be 10. The bridge excitation comes from a separate D.C. Supply. Finally about 50mV of excitation is made available to the bridge. As the ambient temperature goes changing, the RTD's resistance also changes and small output voltage is developed across the bridge. The bridge output is fed to the inverting input of the amplifier. With higher ambient temperature thermocouple transducer tends to produce lower output voltage.

The RTD bridge circuit automatically takes care of this tendency of the thermocouple by applying a small voltage of proper polarity to the inverting terminal of the amplifier. That is how cold junction compensation is achieved. Condenser connected across the terminals of IC suppresses any unwanted disturbances coming to amplifier. The output of operational amplifier is connected to a pot (MAX.) on the panel and is useful for carrying out the calibration operation. Offset Null Pot is useful for zero adjustment.

**Block Diagram:**



**Experiment Setup:**



**Procedure:**

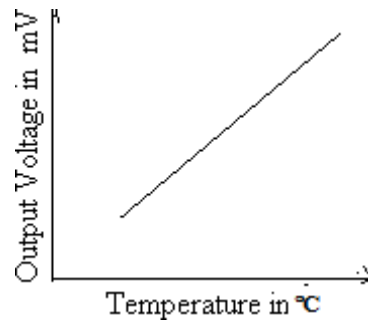
1. Immerse the thermocouple & thermometer into the water bath.
2. Connect the leads from the thermocouple to the respective meter.
3. Switch ON the water bath.
4. Measure the temperature of water using thermometer and the corresponding output voltage of thermocouple using multimeter.
5. For every 5°C rise, the reading of the thermocouple are noted until the temp reaches the maximum temperature (100 °C). Tabulate the readings.

**Graph:** Plot the graph between temperature (X-axis) and thermocouple Output voltage (Y-axis).

**Tabular column:**

S. No.	Thermometer Reading (°C)	Thermocouple Output voltage (mV)

**Model Graph:**



**Post-Lab Exercise:**

1. What is the temperature range of thermocouple?
2. Thermocouple is suitable for \_\_\_\_\_ range of temperature measurement.
3. Why cold junction compensation is needed?
4. Why signal conditioning circuit is needed at the output of thermocouple?
5. State the industrial applications of Thermocouples.
6. What are the advantages and disadvantages of thermocouple?
7. Compare the performance of thermister with thermocouple.

**Result:**

Thus the characteristics of thermocouple is studied and its characteristic curve is plotted.

Exp No.:10 (c)

## CHARACTERISTICS OF RTD

Date:

### Aim:

To analyse characteristics of Resistance Temperature Detector (RTD).

### Apparatus Required:

S. No.	Components / Equipments	Specification	Quantity
1.	RTD	PT100	1
2.	Digital Multimeter	---	1
3.	Thermometer	Max. 100° C	1
4.	Water Bath	---	1
5.	Stop Clock	---	1

### Pre-Lab Exercise:

1. Expand RTD
2. What is the principle of RTD?
3. What are the requirements of a conductor to be used in RTD?
4. RTD has \_\_\_\_\_ temperature coefficient.
5. What are the materials used for constructing RTD?
6. RTD is suitable for \_\_\_\_\_ temperature measurement application.

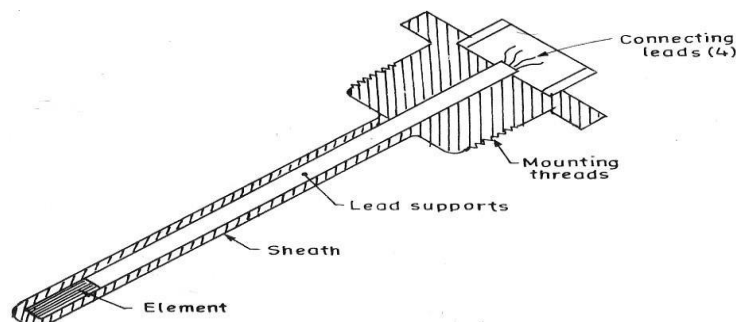
### Theory:

The principle of operation of RTD is based on the fact that electrical resistance of many metals increases almost directly to the temperature and gives high degree of accuracy. These characteristics are well known as Co-efficient of resistance and is defined by the approximate formula  $R_t = R_o (1 + \alpha t)$

Where,  $\alpha$  - Temperature Co-efficient of resistance and  $R_o$  - Resistance of wire at 0°c.

RTD is connected to one of the arms of a bridge circuit. The other two arms are connected by constant resistance. An adjustment and a fixed resistance are attached to the adjacent arm of the bridge. When the RTD is at 0°C the helical potentiometer is set to 0 position by adjusting the MIN control on the panel. The bridge output is given to the meter which also initially indicates zero. The resistance of the RTD changes due to the temperature change. The resistance of the adjacent arm is changed by the introduction of corresponding amount of known resistance until balance is achieved. The change in the resistance of RTD can be measured by noting the revolution of the helical pot.

### Generalized Diagram:

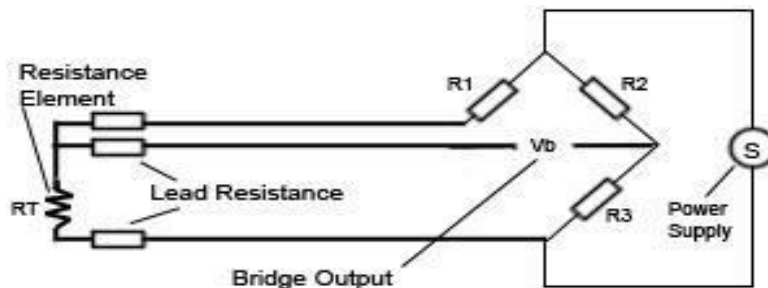


### 3-Wire RTD configuration:

In order to minimize the effects of the lead resistances, a three-wire configuration can be used. Using this method the two leads to the sensor are on adjoining arms. There is a lead resistance in each arm of the bridge so that the resistance is cancelled out, so long as the two lead resistances are accurately the same.

In a three-wire circuit two constant current sources are used, in order to compensate for the disadvantages described above for the two-wire circuits. Similar to the two-wire circuit the current source  $IK_2$  is used to measure the temperature dependent resistance  $R_T$  including the lead and terminal contact resistances. The additional current source  $IK_1$  together with a third lead is used to separately compensate the lead and terminal contact resistances. Assuming the exact same lead and terminal contact resistances for all three leads, the effect on the accuracy of the temperature measurements can be eliminated. But practice has shown that it is not always possible to assure that the terminal contact resistances are always identical.

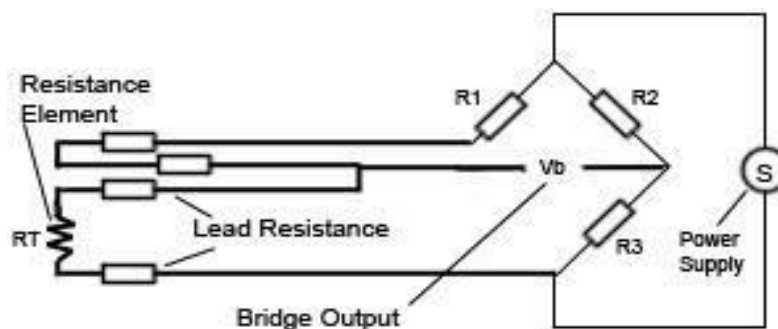
3-Wire RTD Sensor using Bridge Circuit:



### 4-Wire RTD Configuration:

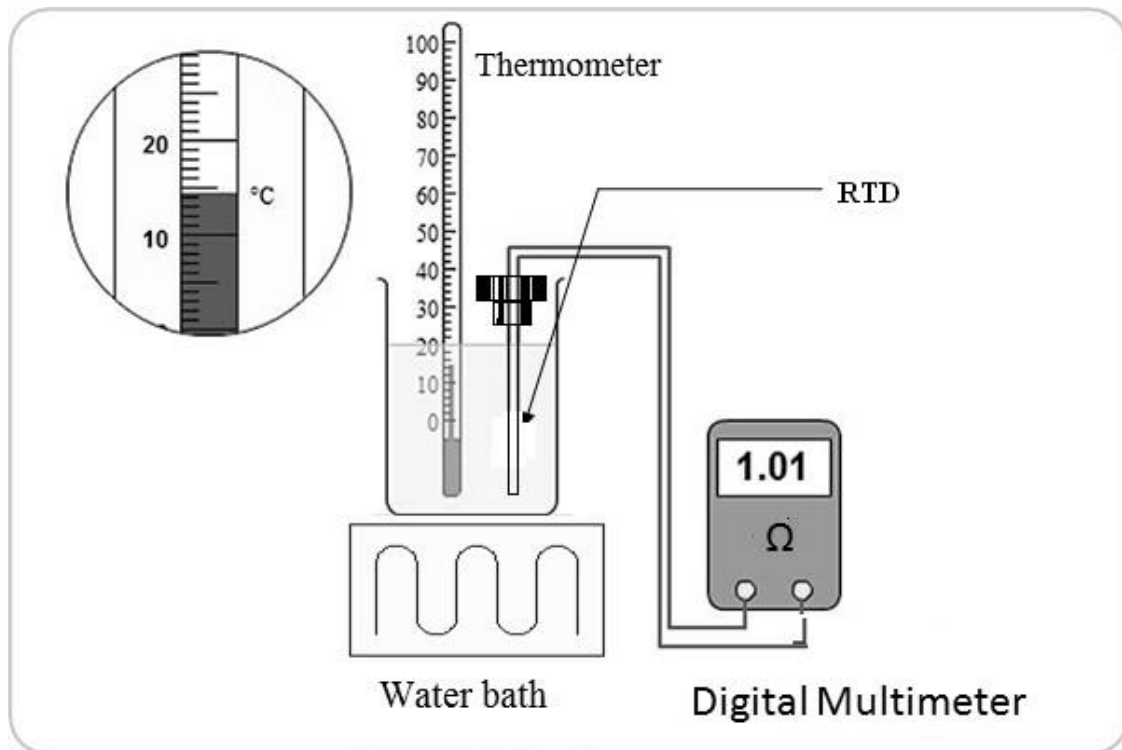
The four-wire resistance thermometer configuration increases the accuracy and reliability of the resistance being measured: the resistance error due to lead wire resistance is zero. In the diagram above a standard two-terminal RTD is used with another pair of wires to form an additional loop that cancels out the lead resistance. The above wheatstone bridge method uses a little more copper wire and is not a perfect solution. Below is a better configuration, four wire kelvin connection. It provides full cancellation of spurious effects; cable resistance of up to  $15\ \Omega$  can be handled. With the 4-wire configuration, the instrument will pass a constant current ( $I$ ) through the outer leads, 1 and 4. The voltage drop is measured across the inner leads, 2 and 3. So from  $V = IR$  we learn the resistance of the element alone, with no effect from the lead wire resistance. This offers an advantage over 3-wire configurations only if dissimilar lead wires are used, and this is rarely the case.

4- Wire RTD sensor using Bridge Circuit:





**Experiment setup:**



**Procedure:**

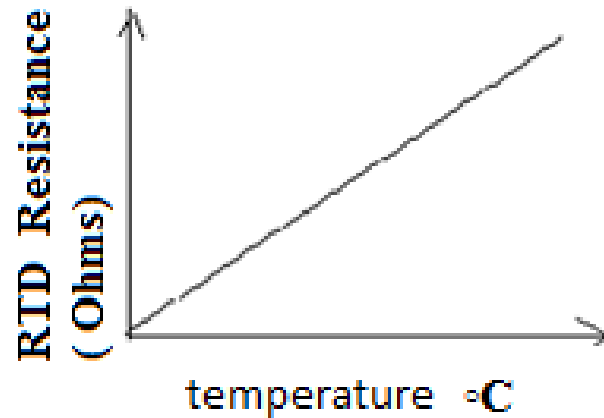
1. Connect the leads from the RTD to the respective meter.
2. The water bath heater is switched ON.
3. Immerse the RTD in water bath .when the water temperature rises note the resistance of RTD for the corresponding temperature
4. Start the stop clock and tabulate the resistance of RTD for every 5 seconds.

**Graph:** Draw the graph between temperature (X – axis) and RTD resistance in ohms(Y – axis).

**Tabular Column:**

S.No.	Temperature °C	RTD Resistance ( Ohms)

**Model Graph:**



**Post-Lab Exercise:**

2. What is meant by pt-100?
3. RTD has \_\_\_\_\_ temperature coefficient.
4. What are the limitations of RTD?
5. What are the advantages of RTD over thermocouple?
6. How error due to lead resistance is corrected in RTD?
7. What are advantages of four wire RTD over three wire RTD ?
8. State the industrial applications of RTD.
9. Compare the performance of thermistor, thermocouple and RTD.

**Result:**

Thus the characteristics of RTD is analyzed and its characteristic curve is drawn.

**Exp No.:11****CHARACTERISTICS OF A/D CONVERTER****Aim:**

To test the characteristics of analog to digital converter using DAC.

**Apparatus required:**

S. No.	Components / Equipments	Specification	Quantity
1.	Op-amp	IC 741	1
2.	Binary counter	IC 7493	1
3.	AND Gate	IC 7408	1
4.	Resistors	3.3 kΩ, 6.8 kΩ,	Each one
5.	Resistor	1.5 kΩ	2
6.	Digital trainer kit	-	1
7.	Regulated Power Supply	(0-15) V	1
8.	Connecting wires	---	Few

**Pre-Lab Exercise:**

1. What is ADC?
2. What are the types of ADC?
3. What is the need for ADC?
4. State Shannon's sampling theorem?

**Theory:**

An analog-to-digital converter, or ADC as it is more commonly called, is a device that converts analog signals into digital signals. A/D converters are electronic circuits that have the following characteristics;

- The input to the A/D converter is a voltage.
- The output of the A/D converter is an n-bit binary signal corresponding to the voltage at the input at a specific instance. Therefore Analog to Digital conversion is a mapping from continuous ranges to binary numbers.

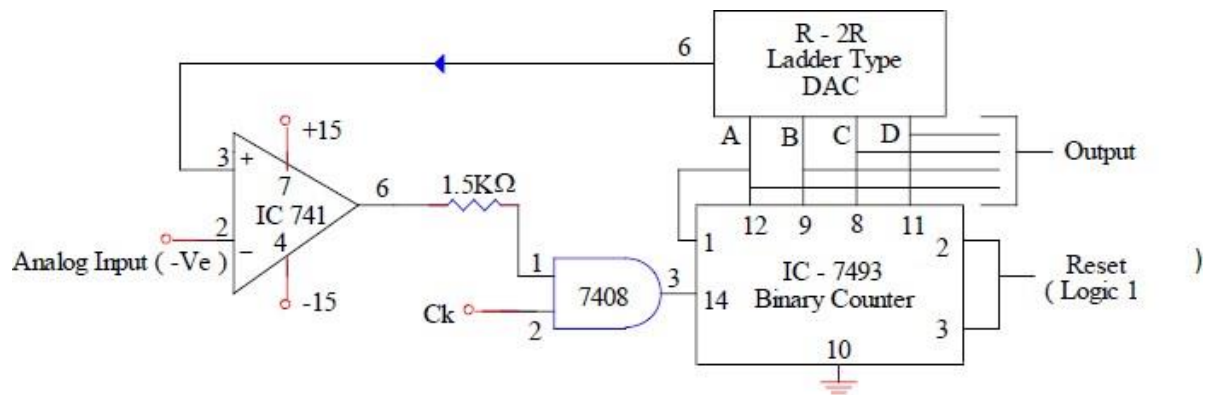
The conversion involves quantization of the input, so it necessarily introduces a known amount of error, called quantization error or quantization noise. The resolution of the converter is the number of discrete values it can produce over the range of analog values. The values are usually stored electronically in binary form, so the resolution is usually expressed in bits. For example, an ADC with a resolution of 8 bits can encode an analog input to one in 256 different levels. Resolution can also be expressed in volts. In that case the resolution is  $Q = V_{\text{range}} / (2^n - 1)$ . where Q is the resolution of ADC, 'n', is the resolution of ADC in bits,  $V_{\text{range}}$  is the whole voltage range at the input.

Analog to Digital converters can be designed with or without the use of DAC as part of their circuitry. The commonly used types of ADC's incorporating DAC are:

- a. Successive Approximation type.
- b. Counting or Ramp type.

The block diagram of a counting type ADC using a DAC is shown in the figure. When the clock pulses are applied, the contents of the register/counter are modified by the control circuit. The binary output of the counter/register is converted into an analog voltage  $V_p$  by the DAC.  $V_p$  is then compared with the analog input voltage  $V_{in}$ . This process continues until  $V_p \geq V_{in}$ . After which the contents of the register /counter are not changed. Thus the output of the register /counter is the required digital output.

**Circuit Diagram:**



For DAC  $R = 1.5K\Omega$   $2R = 3.3K\Omega$   $R_f = 6.8K\Omega$

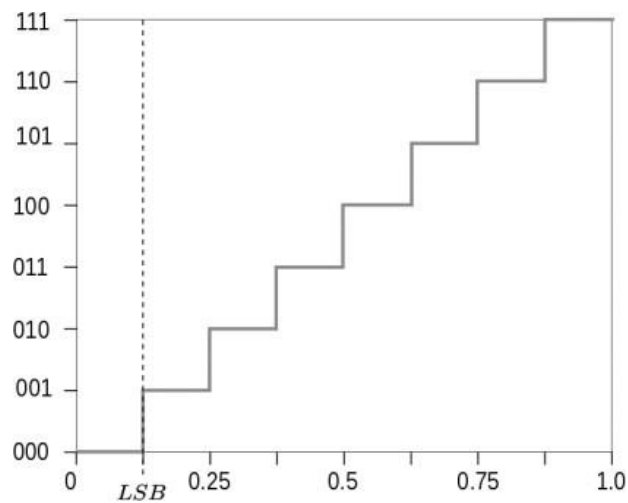
**Procedure:**

1. By making use of the R-2R ladder DAC circuit set up the circuit as shown in the figure.
2. Apply various input voltages in the range of 0 to 10V at the analog input terminal.
3. Apply clock pulses and observe the stable digital output at QD, QC, QB and QA for each analog input voltage.

**Tabular Column:**

S.No.	Analog Input Voltage (V)	Digital Output Voltage (binary form)

### **Model graph: For 3-bit ADC**



### **Post-Lab Exercise:**

1. How SA type converts analog signal to digital signal?
2. What is the resolution of n-bit ADC?
3. What is meant by quantization level?
4. What are the methods of quantization?
5. What are the advantages of Successive Approximation type over ramp type?
6. State the advantages of ramp type over successive approximation type?

### **Result:**

Thus the characteristics of analog to digital converter is tested and it is plotted.

Exp No.:12

## CHARACTERISTICS OF D/A CONVERTER

Date:

### Aim:

To design and test a 4 bit D/A Converter by R - 2R ladder network.

### Apparatus required:

S. No.	Components / Equipments	Specification	Quantity
1.	Op-amp	IC 741	1
2.	Resistors	11 kΩ	4
3.	Resistors	22 kΩ	6
4.	Digital trainer kit	-	1
5.	DMM	-	1
6.	Regulated Power Supply	(0-15) V	1
7.	Connecting wires	---	Few

### Pre-Lab Exercise:

1. Draw the block diagram of DAC
2. What are the different types of DAC?
3. Define Resolution and Quantization
5. Define aperture time.

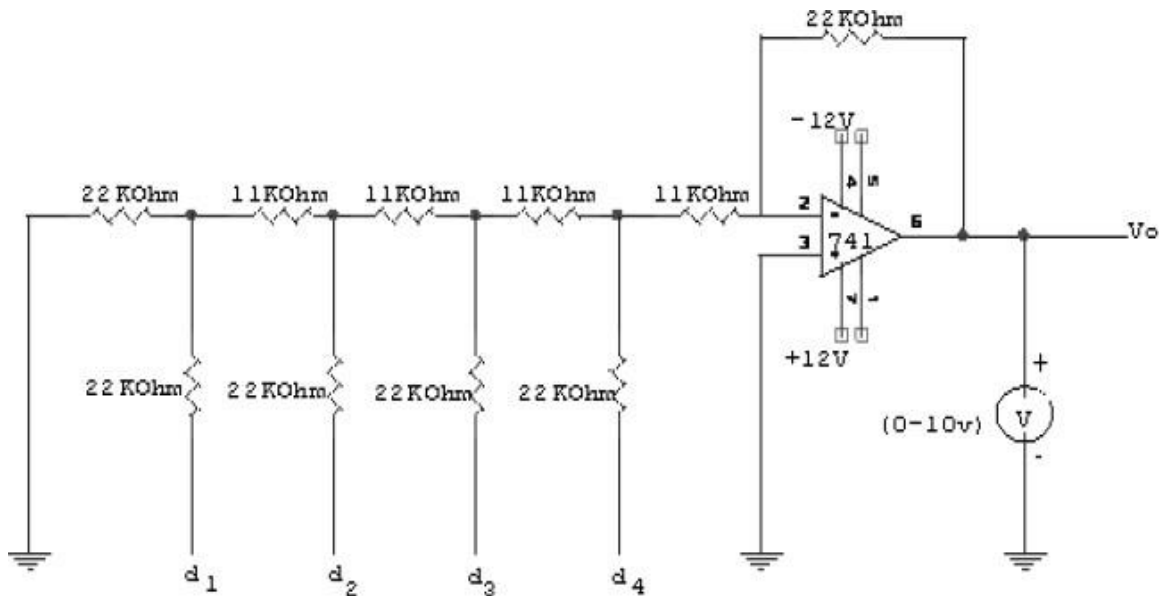
### Theory:

The input is an n-bit binary word 'D' and is combined with a reference voltage 'VR' to give an analog output signal. The output of D/A converter can either be a voltage or current . For a voltage output D/A converter is described as

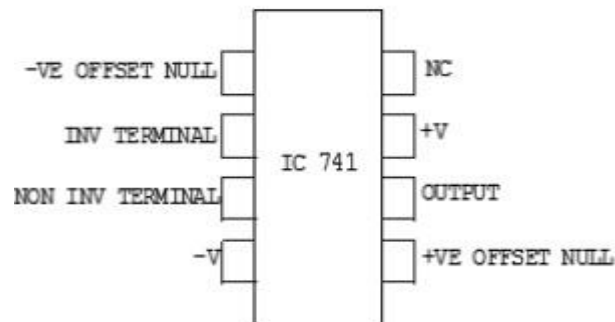
$$V_0 = \left( \frac{-V_{ref} \cdot R_f}{n \cdot R} \right) \left( \frac{d_1}{2^1} + \frac{d_2}{2^2} + \frac{d_3}{2^3} + \frac{d_4}{2^4} + \dots + \frac{d_n}{2^n} \right)$$

Where, **V0** is the output voltage, **d1, d2, d3 and dn** are n bit binary word with the decimal point located at the left. , **d1** is the MSB with a weight of  $V_{fs} / 2$  , **dn** is the LSB with a weight of  $V_{fs} / 2^n$

### Circuit Diagram:



**Pin diagram**



### Formulae used:

$$V_0 = \left( \frac{-V_{ref} \cdot R_f}{n \cdot R} \right) \left( \frac{d_1}{2^1} + \frac{d_2}{2^2} + \frac{d_3}{2^3} + \frac{d_4}{2^4} \right)$$

Where  $V_{ref}$  is the full scale voltage

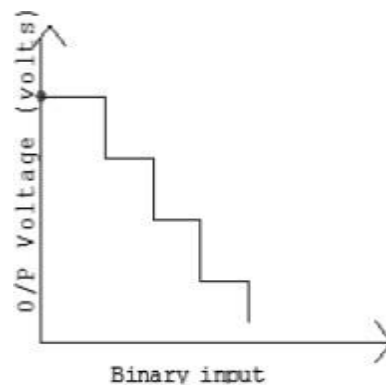
### Procedure:

- 1) Set up the circuit as shown in the circuit diagram
- 2) Measure the output voltage for all binary inputs (0000 to 1111).
- 3) Plot the graph for binary input versus output voltage.

**Tabular Column:**

S.No.	Digital Input				Analog Output	
	D <sub>1</sub>	D <sub>2</sub>	D <sub>3</sub>	D <sub>4</sub>	Theoretical Output (V)	Practical Output (V)
1	0	0	0	0		
2	0	0	0	1		
3	0	0	1	0		
4	0	0	1	1		
5	0	1	0	0		
6	0	1	0	1		
7	0	1	1	0		
8	0	1	1	1		
9	1	0	0	0		
10	1	0	0	1		
11	1	0	1	0		
12	1	0	1	1		
13	1	1	0	0		
14	1	1	0	1		
15	1	1	1	0		
16	1	1	1	1		

**Model graph:**



**Model Calculation:**

**Post-Lab Exercise:**

1. What are the resistor values used in R-2R ladder type DAC?
2. Resistor values used in Weighted resistor type DAC -----
3. What are the advantages of R-2R ladder type DAC over Weighted resistor type DAC?
4. Explain how digital input is converted into analog using R-2R ladder type DAC.
5. Explain how digital input is converted into analog using Weighted resistor type DAC.

**Result:**

Thus the characteristics of digital to analog converter is tested and is plotted.



## Exp No.: 13 (a) MEASUREMENT OF SPEED USING PHOTOELECTRIC TACHOMETER

Date:

### Aim:

To determine the speed of motor using photoelectric tachometer and also to study the characteristics of tachometer.

### Apparatus Required:

S. No.	Components / Equipments	Specification	Quantity
1.	Tachometer	---	1
2.	DC Motor	---	1

### Pre-Lab Exercise:

1. What are the elements involved in photoelectric transducer?
2. How photoelectric transducer works?
3. State the different types of photoelectric transducer.
4. What is meant by tachometer?
5. Rotational speed is measured using-----
6. What is RPM?

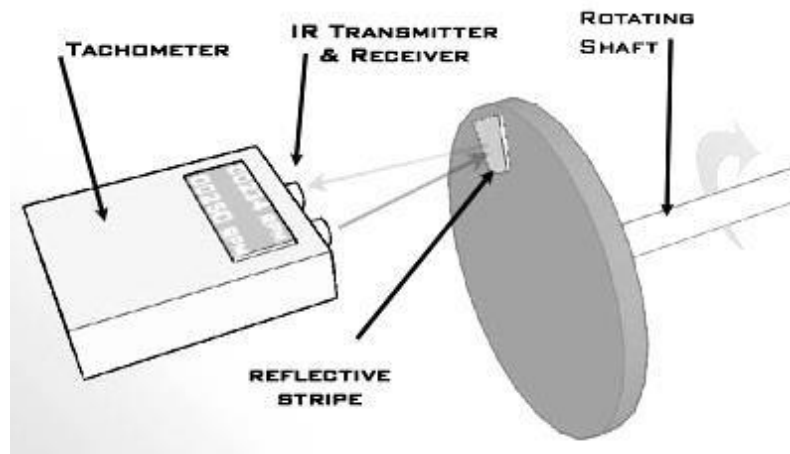
### Theory:

A **tachometer** is an instrument measuring the rotation speed of a shaft or disk, as in a motor or other machine. The device usually displays the revolutions per minute (RPM) on digital display.

This is a device that produces a voltage proportional to the speed of a rotating shaft. Common examples include the rev' counter found in many vehicles. This measures the rotation of the engine crank shaft. The speedometer in vehicles measures the wheel rotation speed. Wind speed gauges use a similar system. Here is a convenient way to detect the rotation of a shaft.

As the notched wheel rotates, the light beam is interrupted. This appears as a small square(ish) wave output from the photodiode. When the shaft rotates faster, more pulses are produced but the pulses are also shorter. This means that the average output remains constant. To make a useful measuring device, the variable length pulses from the photodiode need to be converted into fixed length pulses. A monostable circuit achieves this. The monostable needs to be triggered by short pulses

### Generalized Diagram:

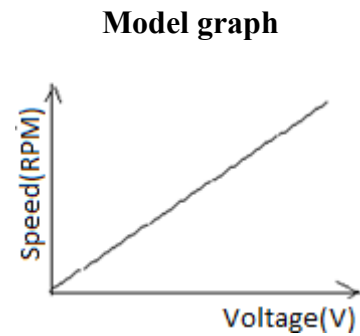


**Procedure:**

1. Switch ON the DC motor.
2. Keep the photoelectric tachometer against the shaft of the DC motor and note down the speed (RPM) of the disc, which displays on tachometer display.
3. Repeat the same for different speeds by varying the DC motor supply.

**Tabular column:**

DC motor supply voltage (Volts)	Photoelectric Tachometer Reading (RPM)		% error
	Observed	Actual	



**Post-Lab Exercise:**

1. Explain how photoelectric tachometer used to measure the speed of shaft?
2. What are the advantages of photoelectric transducers?
3. What are the disadvantages of photoelectric transducers?
4. State the working principle of Stroboscope.
5. Name the other methods used to find the speed of the shaft.

**Result:**

Thus the speed measurement using photoelectric tachometer is done and its variation with input voltage is plotted.

Exp No.:13 (b)

## MEASUREMENT OF TORQUE

Date:

### Aim:

To determine the torque due to dead weights using strain torsion meter and to determine the unknown weight.

### Apparatus Required:

- i) Strain gauge torsion meter.
- ii) Dead weight.

### Pre-Lab Exercise:

1. Define torque.
2. What are the methods used for Torque measurement?
3. What is the unit of torque?
4. What are the advantages of digital torque measurement?

### Theory:

Torque is generally referred to as an angular twist (i.e.) the force that is being applied at a particular angle. Torque can be obtained by measuring force at a known distance.

Torque is given by  $T = Fr \text{ Nm}$

Where,  $F$  = Force in Newton,

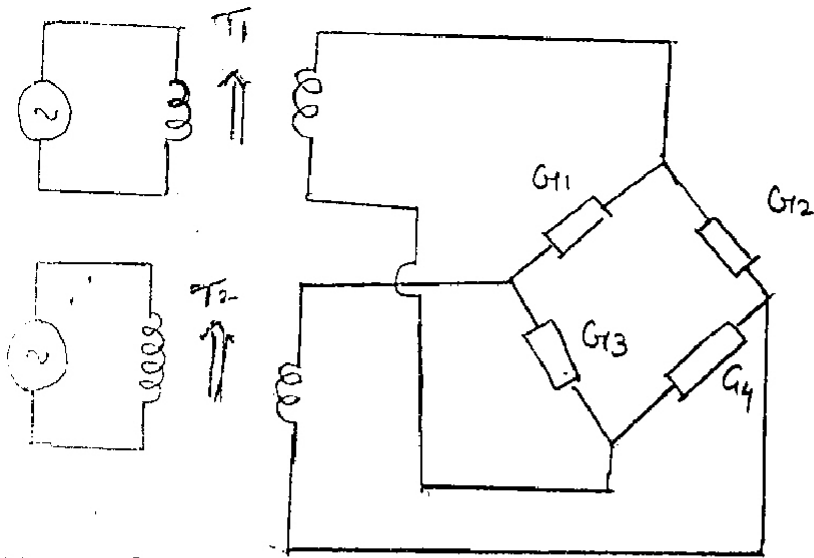
$r$  = Distance at which the force is measured in meter.

The torque measuring device used here makes use of four strain gauges that are arranged in a Wheatstone bridge model. When an angular force or a torque is applied two of the strain gauges undergo a compressive force while two other strain gauge undergo tensile force. This result in the change as far as the dimensions of the strain gauge element is concern which in turn changes the resistance. This change in resistance ensures a production of an output voltage which is a measure of the applied torque.

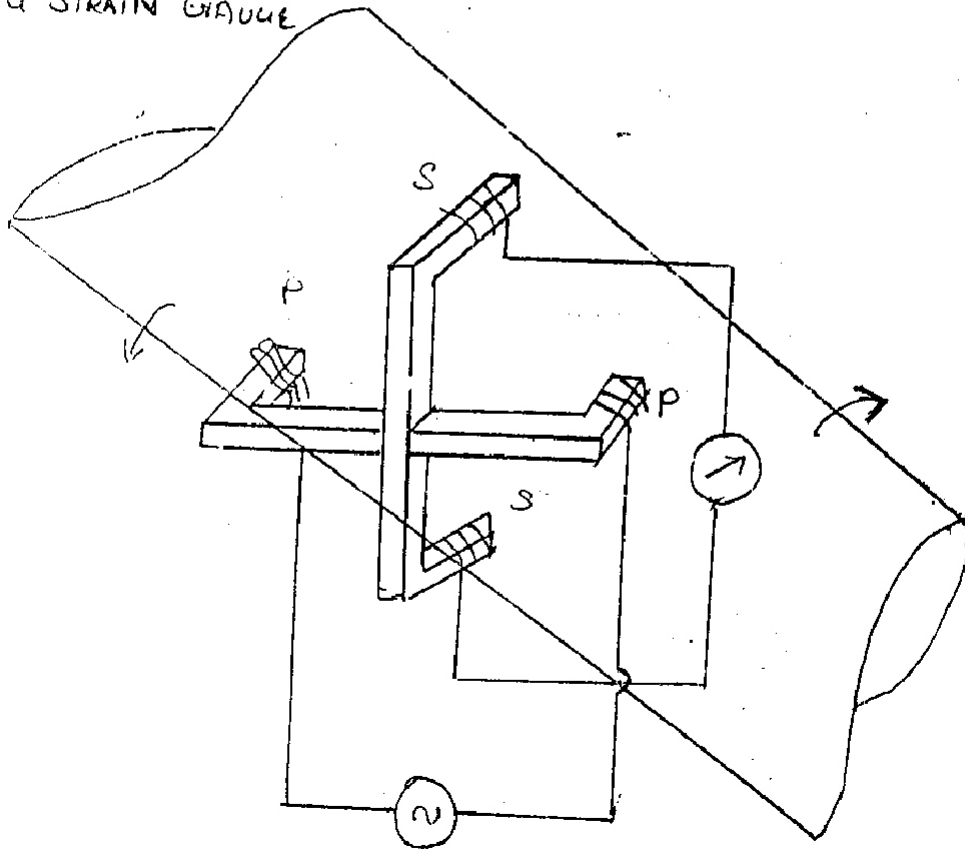
### Procedure:

1. Connect the strain gauge torsion meter to the power supply.
2. Check for calibration of initial zero torque.
3. Now change or fix the hanger so that the shaft is subjected to torque.
4. Now keep the deadweights in the hanger gently.
5. Note the indicated torque value from the strain gauge torsion indicator.
6. Repeat the same for different weights and tabulate the readings.
7. Now repeat the same procedure for the given unknown weight.
8. The unknown weight is interpreted from the graph.
9. The graph is plotted between deadweights and indicated torque value.

**Circuit Diagram:**



USING STRAIN GAUGE

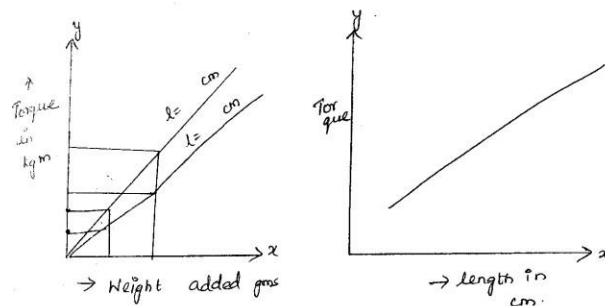


**Tabular Column:**

S.No	Length (cm)	Dead Weights (gms)	Torque indicated (KgM)	Theoretical torque (gm)

**Model Calculation:**

**Model Graph:**



**Post-Lab Exercise:**

1. State the principle of strain gauge.
2. Explain how torque is measured using strain gauge.
3. What is the principle of inductive torque transducer?
4. What is the principle of magnetostrictive torque transducer?
5. What are the advantages of digital torque measurement?
6. Give comparison among different torque measurement methods?

**Result:**

Thus the torque due to deadweights is determined using Strain torsion meter the value of unknown weight is determined.